



EASTWOOD ANDREWS



**31 Watsons Road Newcomb VIC**

3 1 2

Boasting a corner allotment of approx. 661sqm, this fantastic weatherboard home has both position and potential. On offer is two generous living areas with gas heating, open plan kitchen/living, neat bathroom and a divine little sunroom leading to undercover pergola. At the rear is a double garage with power and plenty of storage. Currently leased to a long term tenant paying \$290/wk, who is keen to stay on. Multiple development possibilities (STCA), renovate & extend or remove the house & build two. In a suburb which is one of Geelong's highest growth corridors over the past few years, it's an easy walk to Geelong CBD and the Waterfront.

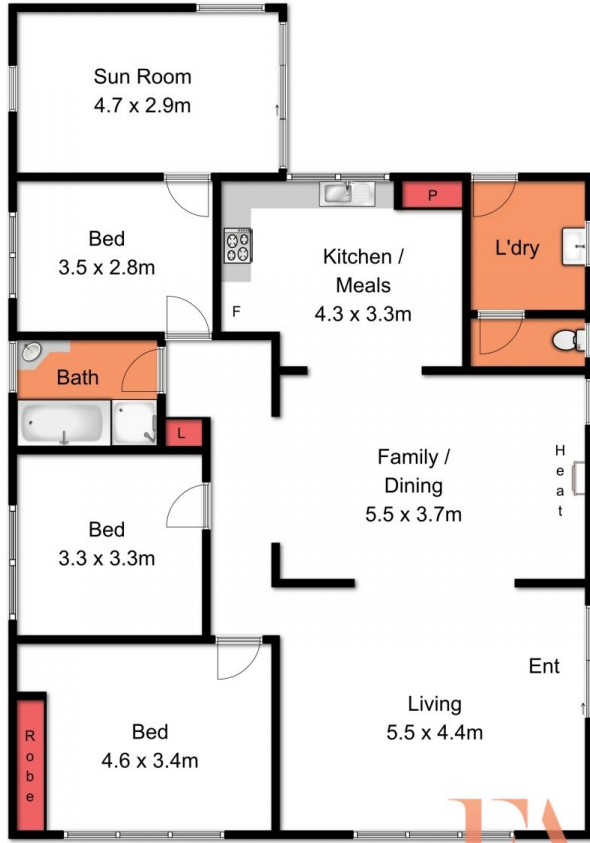
**Land Size** : 661 sqm  
**View** : <https://www.eastwoodandrews.com.au/sale/vic/geelong-district/newcomb/residential/house/5927635>



**Amanda Frick**  
03 52010575



**Nicole Andrews**  
03 5201 0575



Whilst [bwr.com.au](http://bwr.com.au) has made every attempt to ensure the accuracy of the floor plan contained here, measurements are approximate and no responsibility is taken for any error, omission, or mis-statement. This plan is for illustrative purposes only.



**31 Watsons Road**

EASTWOOD A **Newcomb**