



EASTWOOD ANDREWS



6/17 The Esplanade Geelong VIC

2 1 1

If you thought you could only ever dream of buying a home with waterfront views, the price of this apartment is sure to surprise. This prime location offers stunning views across Corio Bay as well as the convenience of being a comfortable walking distance to the restaurants and cafes of the Waterfront and Pakington Street, Geelong CBD, Steampacket Gardens and the Carousel. Minutes to the train station and within easy access to Melbourne, this location is definitely hard to beat.

Situated in a quiet and well maintained complex of 8 apartments, this property is perfect for a downsizer, owner occupier or as a weekend getaway or investment, with a potential rental income of \$350 - 370 per week.

Comprising kitchen with plenty of cupboard space and a gas oven, dining/lounge opening out to a balcony where

Type : Unit
Price : \$ 543,000
View : <https://www.eastwoodandrews.com.au/sale/vic/geelong-district/geelong/residential/unit/5927667>



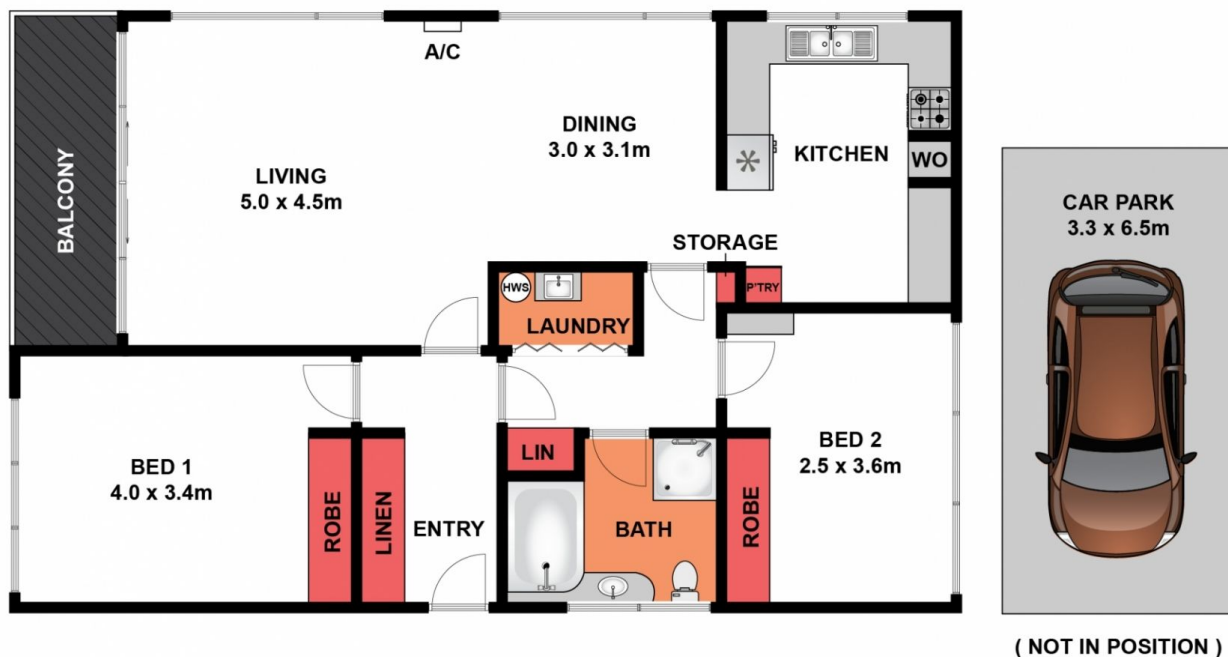
Nicole Andrews
03 5201 0575



Amanda Frick
03 52010575

[For full version visit the website](https://www.eastwoodandrews.com.au)

<https://www.eastwoodandrews.com.au>



Whilst bwr.com.au has made every attempt to ensure the accuracy of the floor plan contained here, measurements are approximate and no responsibility is taken for any error, omission, or mis-statement. This plan is for illustrative purposes only!

6/17 The Esplanade, Geelong

EA
EASTWOOD ANDREWS