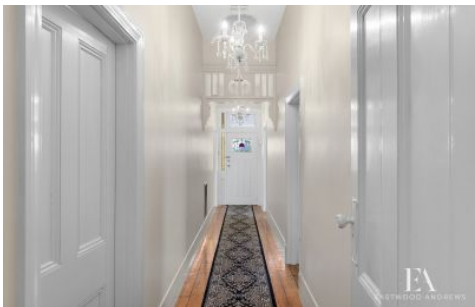




EASTWOOD ANDREWS



50 Fitzroy Street Geelong VIC

4 1 2

Set on the fringe on the CBD, this character home will delight those with a passion for old world charm, in one of the best streets Geelong has to offer. Displaying an ornate street frontage with cottage style garden, a great family sized house, side lane access with enormous double garage and workshop, tranquil garden retreat and outdoor Pagola, this home will cater for the whole family.

On offer is four large bedrooms (or three and second living), an open plan living area with timber kitchen, modern central bathroom with clawfoot bath and double shower, separate WC, separate laundry, outdoor covered entertaining deck, spacious rear yard and DLUG. Featuring timber floorboards, built in robes, ornate fireplaces, high ceilings, timber fretwork, wood log fire and many other period features throughout.

The Geelong Waterfront, Geelong Central shopping centers, the Geelong Hospital, The Cinema, Restaurants

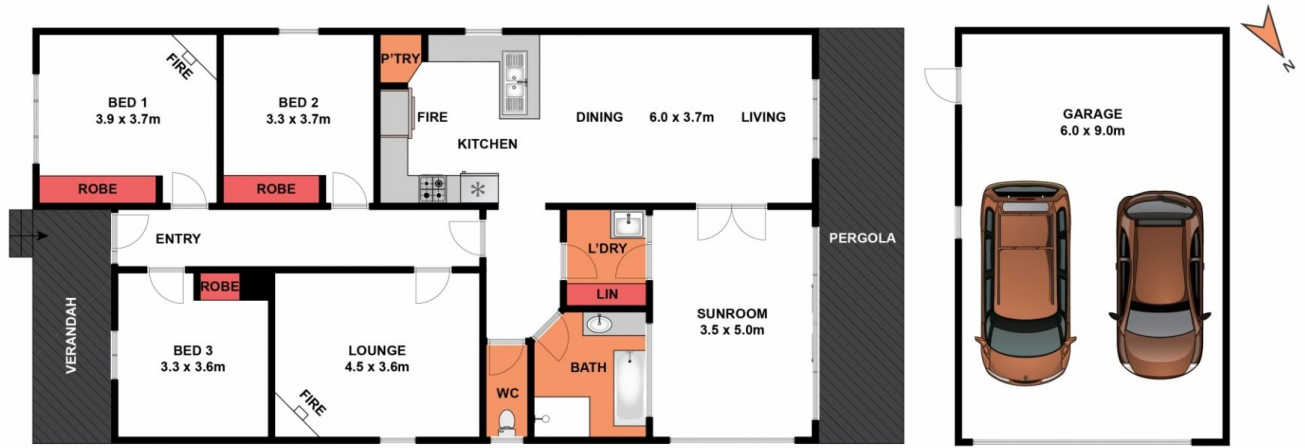
Land Size : 392 sqm
View : <https://www.eastwoodandrews.com.au/sale/vic/geelong-district/geelong/residential/house/5927685>



Amanda Frick
03 52010575



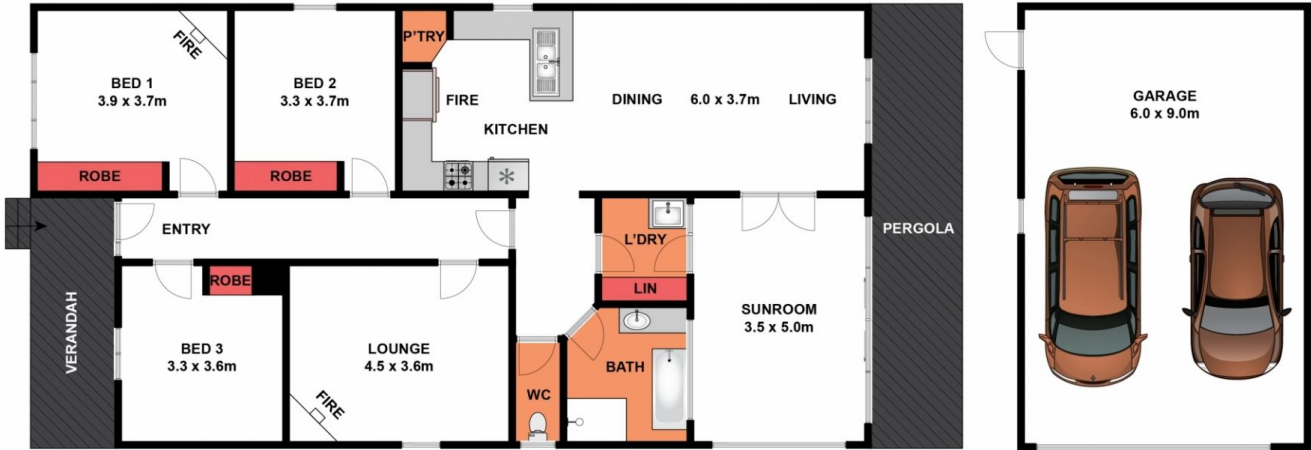
Nicole Andrews
03 5201 0575



SITE PLAN

Whilst bwrn.com.au has made every attempt to ensure the accuracy of the floor plan contained here, measurements are approximate and no responsibility is taken for any error, omission, or mis-statement. This plan is for illustrative purposes only.

50 Fitzroy Street, Geelong



Whilst bwrn.com.au has made every attempt to ensure the accuracy of the floor plan contained here, measurements are approximate and no responsibility is taken for any error, omission, or mis-statement. This plan is for illustrative purposes only.

50 Fitzroy Street, Geelong