



EASTWOOD ANDREWS



### 48 Pioneer Road Grovedale VIC

3 1 1

Situated within walking distance to Waurn Ponds shopping Centre, medical facilities, local schools and public transport, and only a 10 minute drive to Torquay or into town, this home is close to everything. Perfect for a first home buyer or investor, with a potential rental income of \$370/week. Presented in original condition, this home offers the opportunity to renovate or demolish and build new and drastically increase the value of your asset.

Comprising a formal lounge, kitchen/dining with gas wall oven and gas cooktop. There are 3 bedrooms each with built in robes and the bathroom provides a separate bath and shower, and separate toilet.

Outdoors is a carport for undercover parking and a secure rear yard with large steel storage shed. Allotment approx 580sqm.

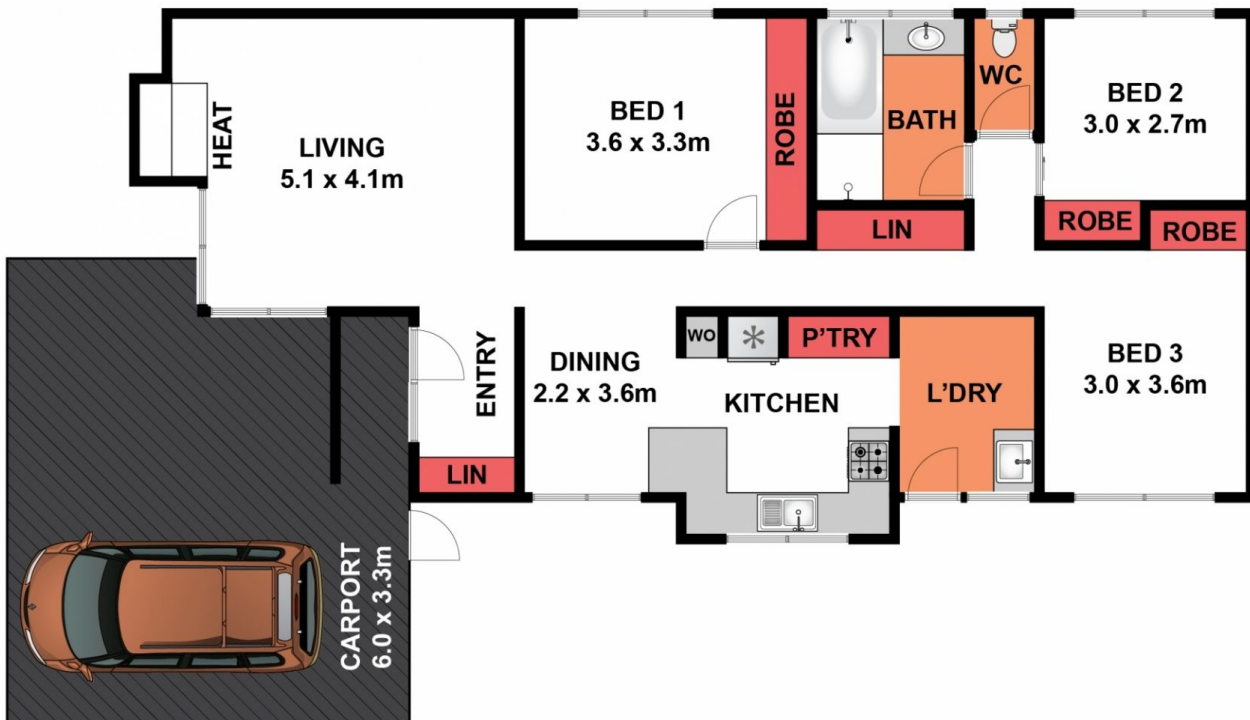
Make your enquiries today, properties in this price bracket are becoming harder and harder to find.

**Price** : \$ 375,000  
**Land Size** : 580 sqm  
**View** : <https://www.eastwoodandrews.com.au/sale/vic/geelong-district/grovedale/residential/home/5927703>



**Nicole Andrews**  
03 5201 0575

<https://www.eastwoodandrews.com.au>



Whilst [bwrn.com.au](http://bwrn.com.au) has made every attempt to ensure the accuracy of the floor plan contained here, measurements are approximate and no responsibility is taken for any error, omission, or mis-statement. This plan is for illustrative purposes only.

## 48 Pioneer Road, Grovedale



**SITE PLAN**

Whilst [bwrn.com.au](http://bwrn.com.au) has made every attempt to ensure the accuracy of the floor plan contained here, measurements are approximate and no responsibility is taken for any error, omission, or mis-statement. This plan is for illustrative purposes only.

**48 Pioneer Road, Grovedale**