



EASTWOOD ANDREWS



8 Laffan Court Bannockburn VIC

4 2 6

This stunning, well maintained and ideally presented four bedroom family home, situated on approximately 5,238 sqm will surely impress.

Neatly tucked away in a quiet court location, you can enjoy the tranquility of a country lifestyle, with the convenience of having shops and all amenities close by.

As you enter the first thing you will notice is the wide, well-lit entrance and large spacious living area drenched in natural light. This formal living incorporates an open room with bay windows, quality carpet and wood fireplace. The heart of the home is definitely the open plan kitchen/living/dining which opens to an unbelievable entertaining room.

There are 4 bedrooms, three have BIRs, are newly carpeted and are positioned in one wing of the home with a

Type : House
Price : \$ 780,000
Land Size : 5238 sqm
View : <https://www.eastwoodandrews.com.au/sale/vic/geelong-district/bannockburn/residential/house/5927717>

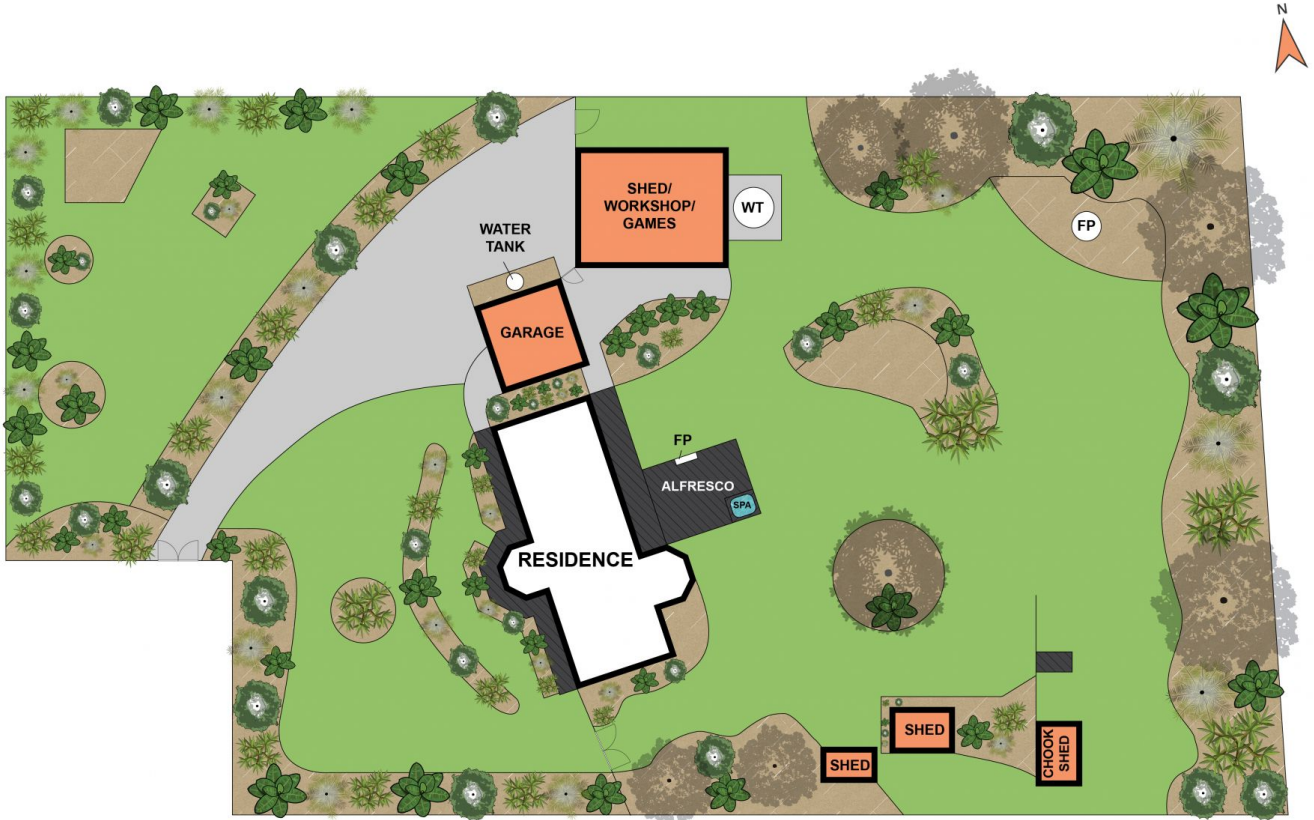
[For full version visit the website](https://www.eastwoodandrews.com.au)

<https://www.eastwoodandrews.com.au>



Whilst bwrn.com.au has made every attempt to ensure the accuracy of the floor plan contained here, measurements are approximate and no responsibility is taken for any error, omission, or mis-statement. This plan is for illustrative purposes only.

8 Laffan Court, Bannockburn



SITE PLAN

Whilst bwrn.com.au has made every attempt to ensure the accuracy of the floor plan contained here, measurements are approximate and no responsibility is taken for any error, omission, or mis-statement. This plan is for illustrative purposes only.

8 Laffan Court, Bannockburn