



EASTWOOD ANDREWS



26-28 Hillclimb Drive Leopold VIC

5 2 2

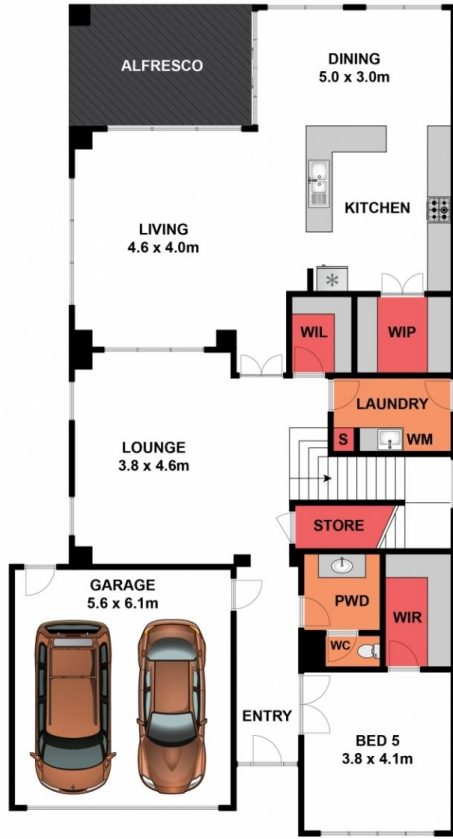
Searching for your dream home? Then look no further - you will truly be proud to call this property home. Built in 2011 by Metricon, this is the perfect choice for a family that enjoys entertaining and a relaxed yet stylish lifestyle, surrounded by all amenities and only 15 minutes from Geelong CBD and coastal areas. Comprising 38 squares of living space over two levels, all rooms are of large proportions providing a feeling of space and grandeur throughout, this is certainly luxurious living on a grand scale.

The first level offers a guest/5th bedroom with walk in robe, formal lounge plus a light filled open plan kitchen/dining/family area. The kitchen has a freestanding 900mm s/s oven, dishwasher, window splashback, stone benchtops and impressive large walk in pantry. The dining area opens out to the decked alfresco area for combined indoor/outdoor entertaining which can be utilised all year

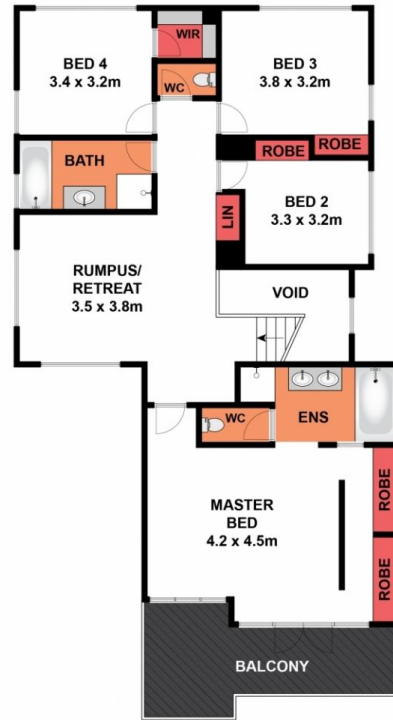
Land Size : 525 sqm
View : <https://www.eastwoodandrews.com.au/sale/vic/geelong-district/leopold/residential/house/5927724>



Nicole Andrews
03 5201 0575



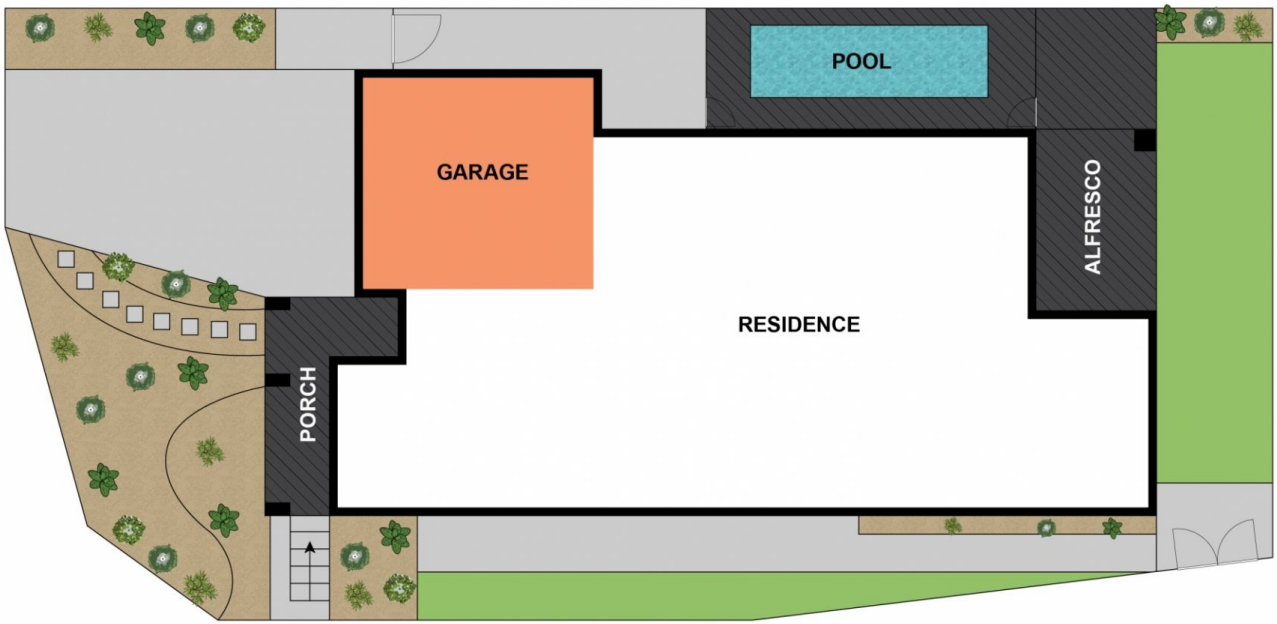
LOWER LEVEL



UPPER LEVEL

Whilst bwrn.com.au has made every attempt to ensure the accuracy of the floor plan contained here, measurements are approximate and no responsibility is taken for any error, omission, or mis-statement. This plan is for illustrative purposes only!

26-28 Hillclimb Drive, Leopold



SITE PLAN

Whilst bwrn.com.au has made every attempt to ensure the accuracy of the floor plan contained here, measurements are approximate and no responsibility is taken for any error, omission, or mis-statement. This plan is for illustrative purposes only.

26-28 Hillclimb Drive, Leopold

