



EASTWOOD ANDREWS



6 Tully Street East Geelong VIC

3 1 2

This stunning Victorian home retains many of its desired, original features. With soaring ceilings, polished floorboards and original fireplaces and chimneys, this home is sure to charm the hearts of many savvy buyers. Situated in one of Geelong's prime locations, close to the CBD, the Garden Street boutique cafe precinct, the South Geelong train station and the Stadium.

Type : House
Price : \$ 760,000
Land Size : 483 sqm
View : <https://www.eastwoodandrews.com.au/sale/vic/geelong-district/east-geelong/residential/house/5927756>

This home is sure to suit many small families and proudly offers three bedrooms, two are spacious with fire places and built in robes, two substantial living areas including a formal lounge room and a sunlit family room, updated kitchen and dining area, neat and tidy central bathroom and internal laundry with ducted heating throughout.

[For full version visit the website](https://www.eastwoodandrews.com.au)

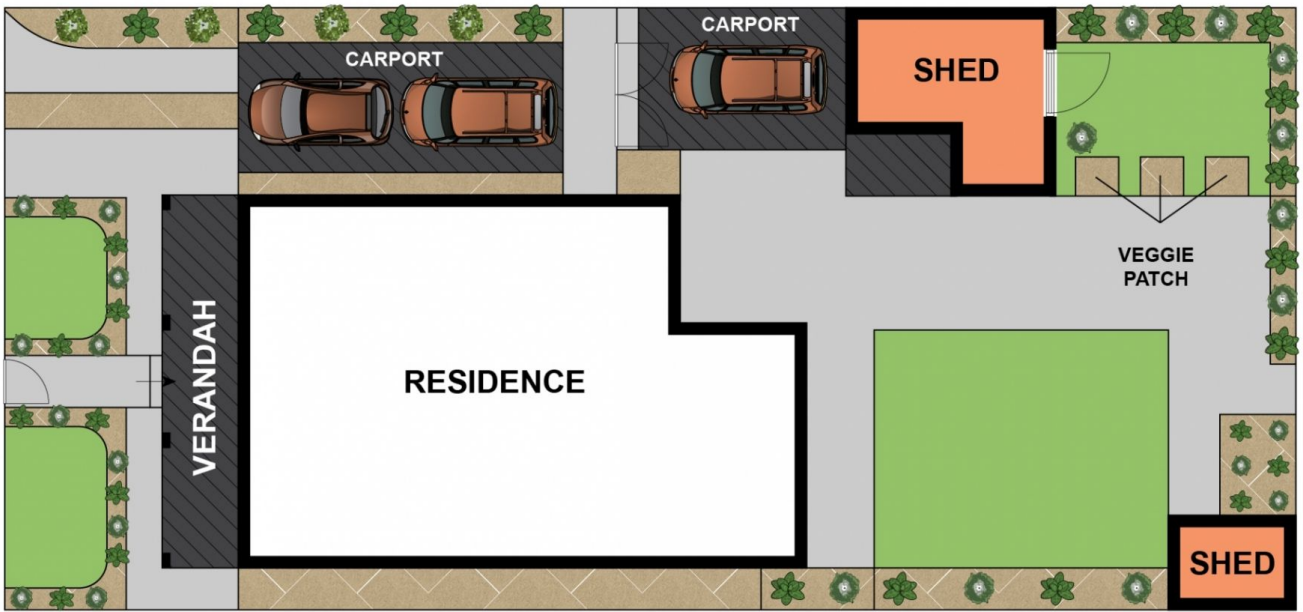


Amanda Frick
03 52010575



Nicole Andrews
03 5201 0575

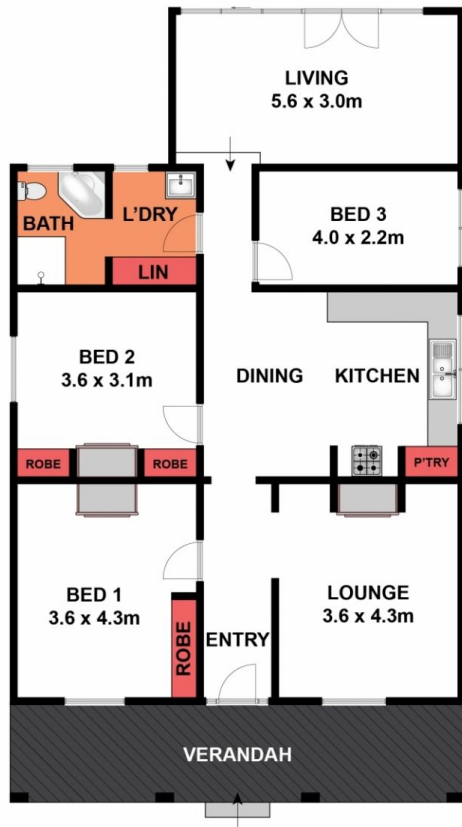
<https://www.eastwoodandrews.com.au>



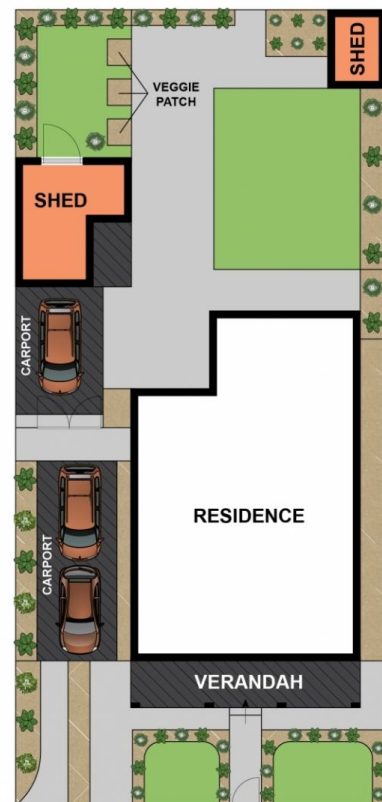
SITE PLAN

Whilst bwrn.com.au has made every attempt to ensure the accuracy of the floor plan contained here, measurements are approximate and no responsibility is taken for any error, omission, or mis-statement. This plan is for illustrative purposes only.

6 Tully Street, East Geelong



(NOT IN POSITION)



SITE PLAN



Whilst bwrn.com.au has made every attempt to ensure the accuracy of the floor plan contained here, measurements are approximate and no responsibility is taken for any error, omission, or mis-statement. This plan is for illustrative purposes only.

6 Tully Street, East Geelong