



EASTWOOD ANDREWS



6 Mitta Court Corio VIC

3 1 2

Situated a short walk from Corio Village, public transport and medical facilities, there really is no need for a car here.

The quiet court location and convenience to all facilities is what makes this home so appealing and will make the perfect choice for first home buyers and investors, with an estimated rental income of \$360 per week.

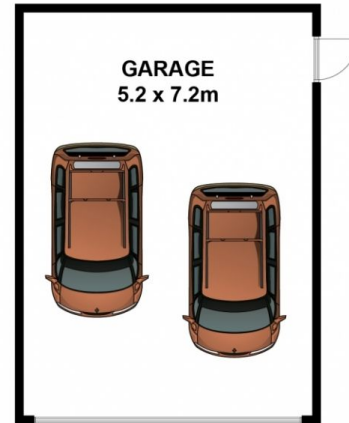
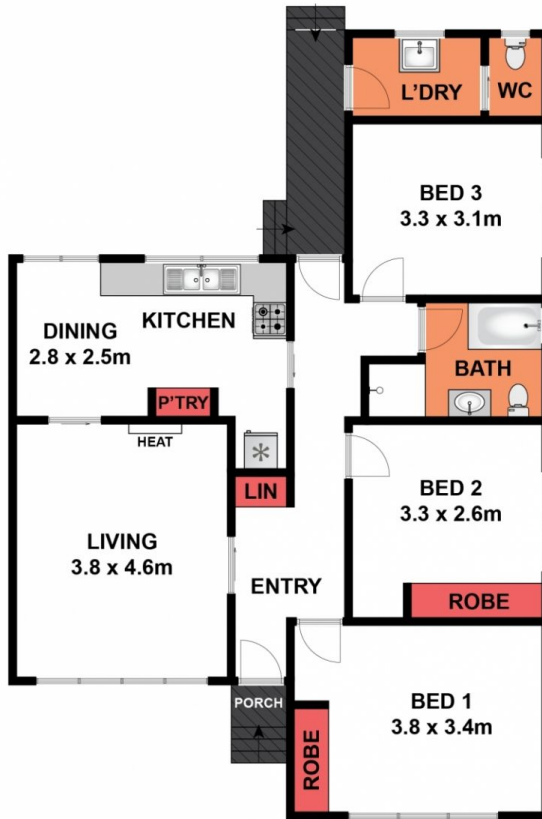
Having only had one owner since it was built in 1967, the home has been well loved and cared for and is presented for its new owner in an immaculate and well maintained condition. Comprising a wide entry, formal lounge with gas heating, large kitchen/meals overlooking the rear yard making it easy to keep an eye on young children whilst cooking dinner. The three bedrooms are all a great size, one with built in robes, the remaining two have freestanding robes which are included in the sale. The central bathroom has a toilet and separate bath and shower. The laundry has an adjoining 2nd toilet.

Land Size : 566 sqm

View : <https://www.eastwoodandrews.com.au/sale/vic/geelong-district/corio/residential/house/5927768>



Nicole Andrews
03 5201 0575



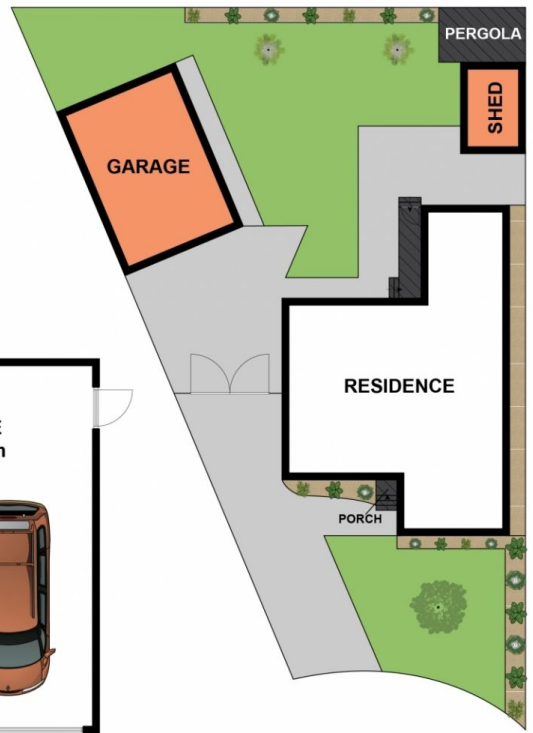
(NOT IN POSITION)

Whilst bwrn.com.au has made every attempt to ensure the accuracy of the floor plan contained here, measurements are approximate and no responsibility is taken for any error, omission, or mis-statement. This plan is for illustrative purposes only.

6 Mitta Court, Corio



(NOT IN POSITION)



SITE PLAN

Whilst bwrn.com.au has made every attempt to ensure the accuracy of the floor plan contained here, measurements are approximate and no responsibility is taken for any error, omission, or mis-statement. This plan is for illustrative purposes only.

6 Mitta Court, Corio