



EASTWOOD ANDREWS



47 Regent Street Whittington VIC

3 1 3

Situated only 5 minutes from Geelong CBD, walking distance to local shops, schools, Gordan Tafe college and public transport this property is sure to appeal to first home buyers and investors, with a potential rental income of \$370/week.

Comprising a central hallway, formal lounge with gas heater and split system AC, updated kitchen/dining with gas cooktop, electric oven and a dishwasher. The three bedrooms are all a good size and each have built in robes and ACs. The bathroom has also been updated with a shower over the bath and modern vanity, separate toilet. Outdoors is a private north facing lawn area, undercover area for entertaining, single garage and dual side drive providing plenty of offstreet parking or room to store a trailer or caravan. Allotment approximately 556sqm.

Make your enquiries today, this home has plenty to offer at an affordable price range.

Price : \$ 461,000
Land Size : 556 sqm
View : <https://www.eastwoodandrews.com.au/sale/vic/geelong-district/whittington/residential/home/5927778>



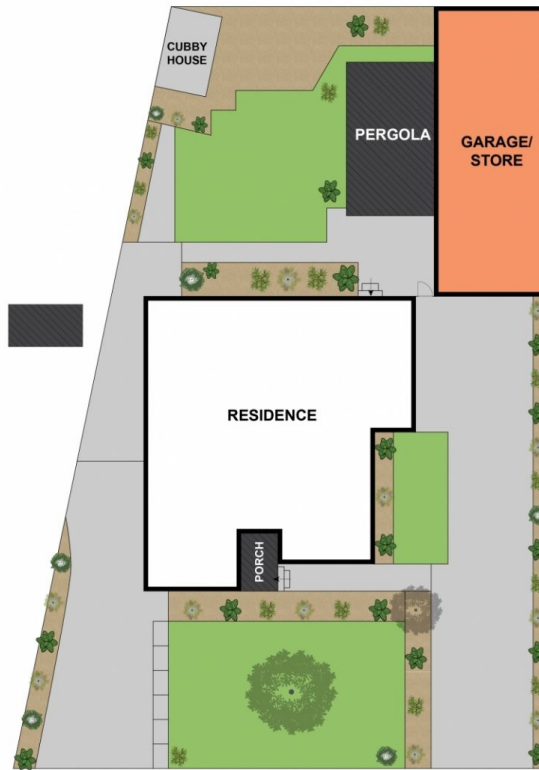
Nicole Andrews
03 5201 0575



Sarabjeet Singh
5201 0575



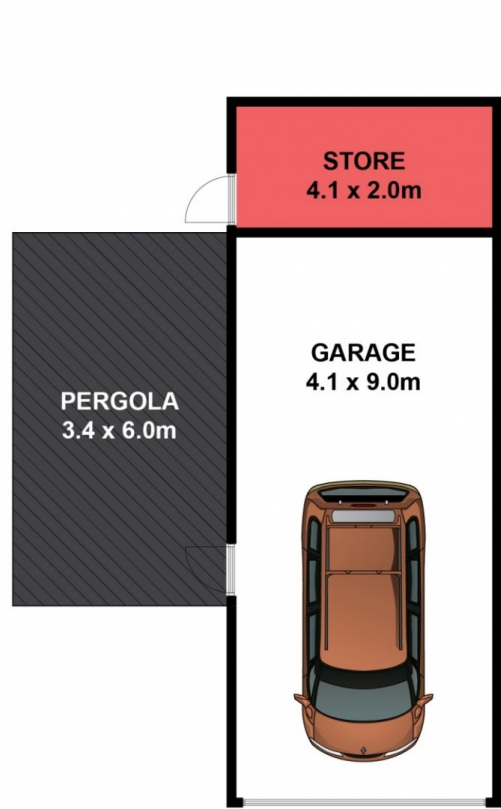
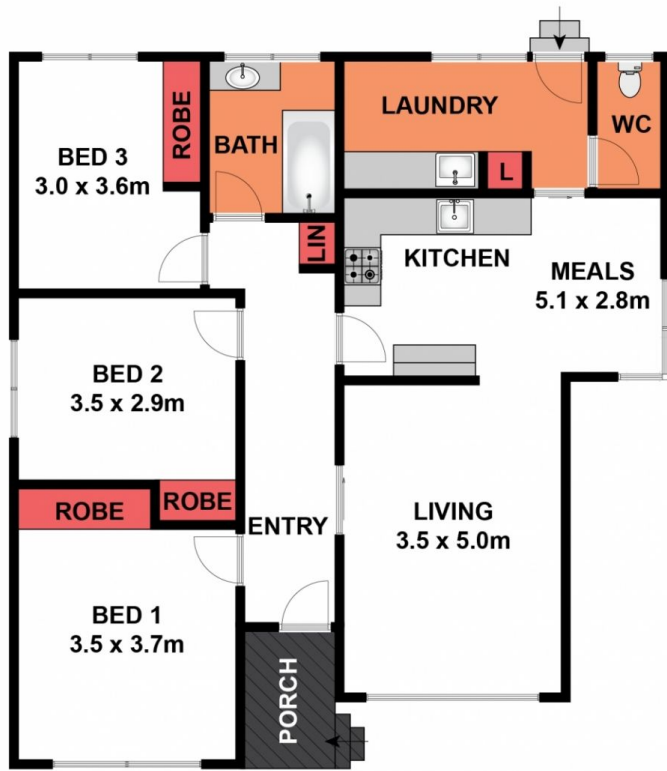
(NOT IN POSITION)



SITE PLAN

Whilst bwrn.com.au has made every attempt to ensure the accuracy of the floor plan contained here, measurements are approximate and no responsibility is taken for any error, omission, or mis-statement. This plan is for illustrative purposes only.

47 Regent Street, Whittington



(NOT IN POSITION)

Whilst bwrn.com.au has made every attempt to ensure the accuracy of the floor plan contained here, measurements are approximate and no responsibility is taken for any error, omission, or mis-statement. This plan is for illustrative purposes only.

47 Regent Street, Whittington