



EASTWOOD ANDREWS



### 37 Hesse Street Winchelsea VIC

3 1 2

With great space and natural light, this home offers the opportunity to complete the partial renovations and reap the rewards in future. The brick veneer home is set on a large block (892m<sup>2</sup>) within minutes of shopping centre, cafes, Barwon River walks and Primary School.

The open plan design offers spacious lounge with northerly aspect and slow combustion heater, generous dining space adjoins the well appointed kitchen with excellent storage and bench space. The 3 bedrooms all have robes and share the new family bathroom, with walk in shower, vanity and full size bath.

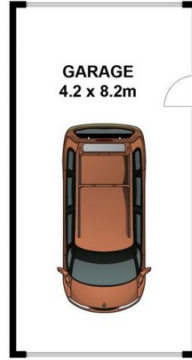
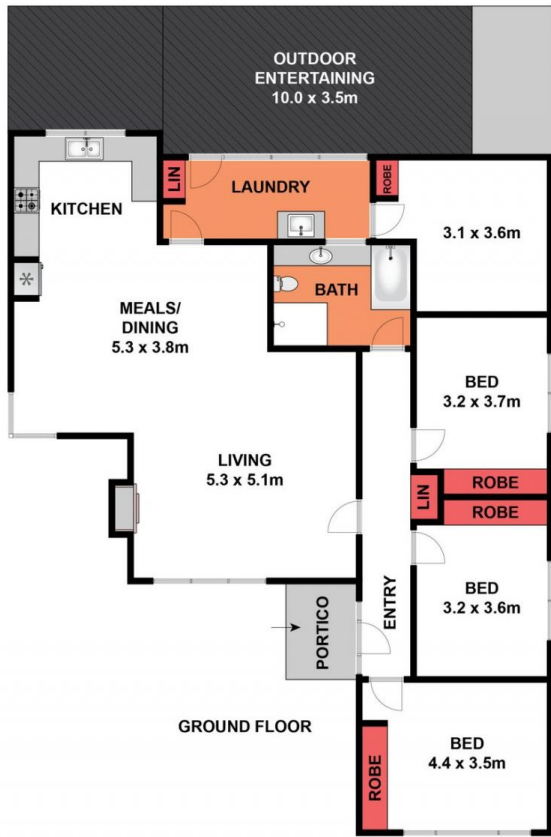
The sunroom opens to laundry and study space. The rear deck overlooks the large backyard with established trees and 6m x 8m Colourbond double garage with power completes the fantastic package, ideal for a young family, first home buyer, downsizer or investor. Call today as this one won't last long.

**Land Size** : 892 sqm

**View** : <https://www.eastwoodandrews.com.au/sale/vic/great-ocean-rd-otway-ranges/winchelsea/residential/house/6472408>



**Andrew Crowhurst**  
03 5201 0575

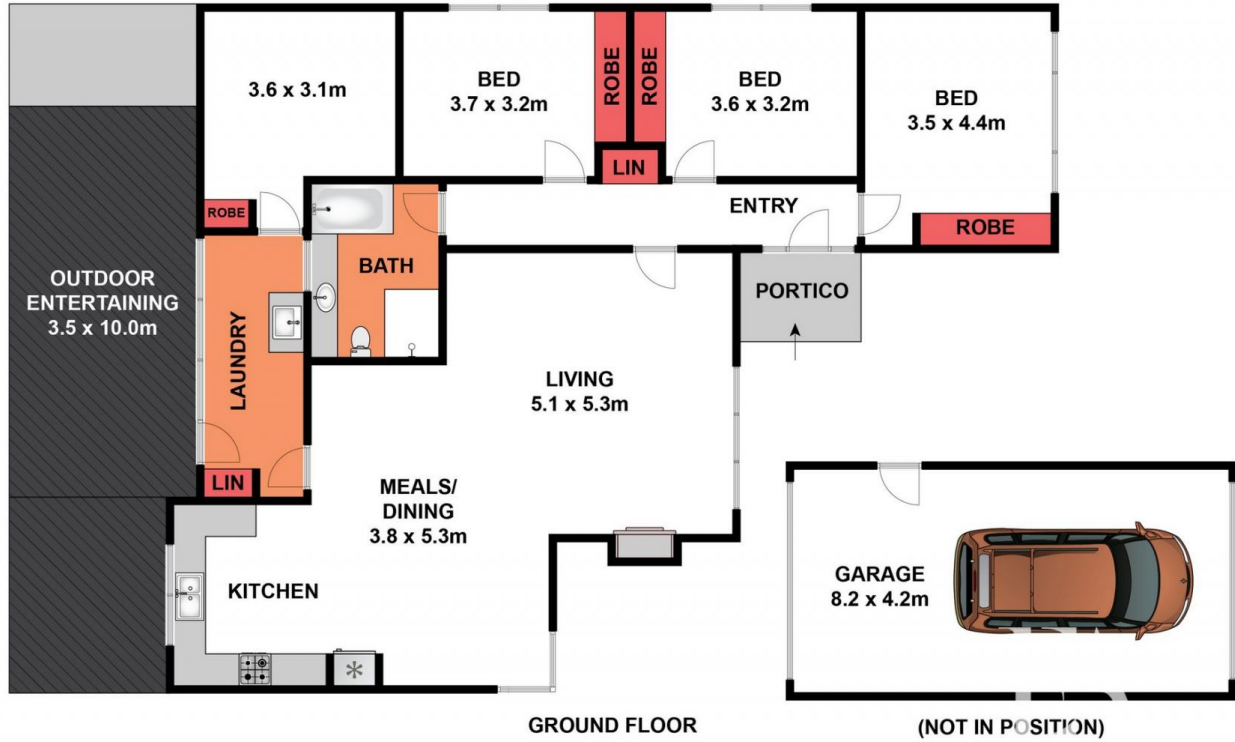


(NOT IN POSITION)



Whilst [bwrn.com.au](http://bwrn.com.au) has made every attempt to ensure the accuracy of the floor plan contained here, measurements are approximate and no responsibility is taken for any error, omission, or mis-statement. This plan is for illustrative purposes only.

## 37 Hesse Street, Winchelsea



Whilst [bwrn.com.au](http://bwrn.com.au) has made every attempt to ensure the accuracy of the floor plan contained here, measurements are approximate and no responsibility is taken for any error, omission, or mis-statement. This plan is for illustrative purposes only.

## 37 Hesse Street, Winchelsea