



EASTWOOD ANDREWS



### 3 Euroka Court Grovedale VIC

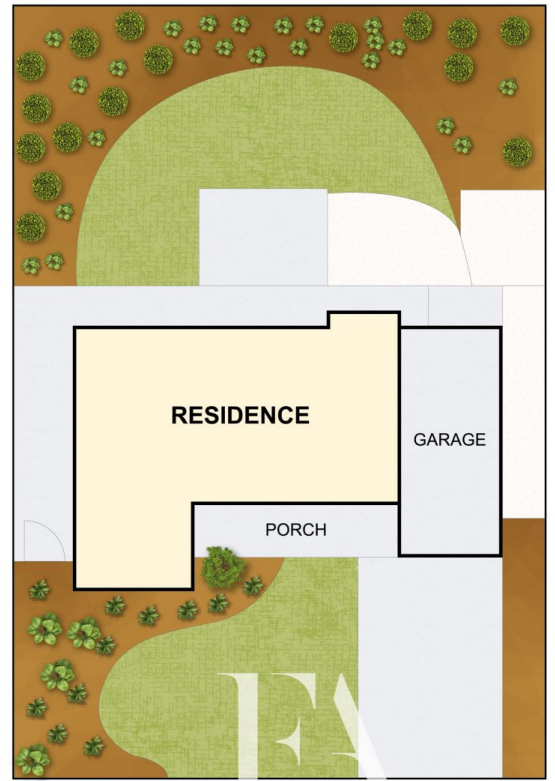
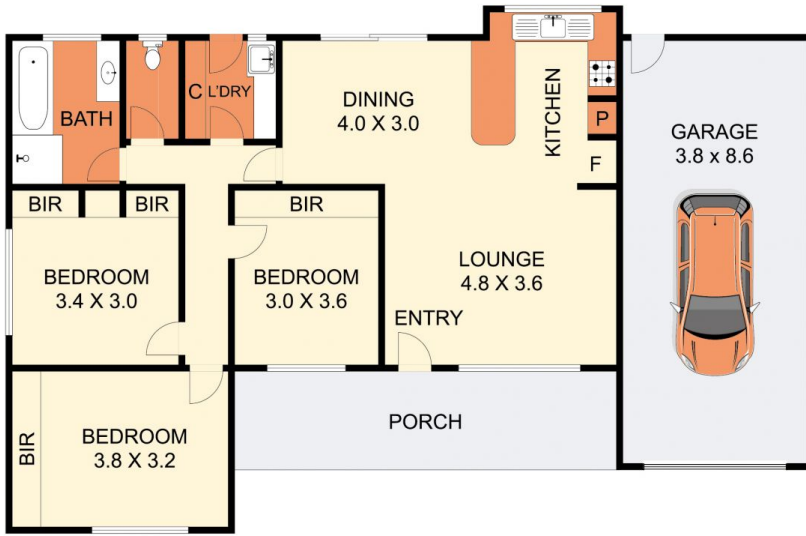
3 1 1

Picture perfect in every way this modest brick veneer home has been transformed into a stunning home that is sure to please. Offering a bright open plan living space, designer kitchen with excellent storage, bench space and Stainless Steel appliances & dishwasher. Overlooking the north facing dining area and connects to the large alfresco area with garden views. There's 3 double bedrooms with robes, fresh paint and new carpet all with easy access to the beautiful bathroom with soaker bath, shower and vanity, all with a high end feel. Separate toilet suite and large laundry with direct yard access. The outdoor spaces are vast and manicured with establishing gardens and vege beds, alfresco area all bathing in the northerly sun. Split system heating & cooling, instant gas hot water. 614m<sup>2</sup> block with lock up 1.5 car (long) garage, (that could be opened up to the rear for yard vehicle access). The front yard features new concrete driveway, turf lawn and mulched gardens

**Price** : \$ 696,100  
**Land Size** : 614 sqm  
**View** : <https://www.eastwoodandrews.com.au/sale/vic/geelong-district/grovedale/residential/home/6881481>



**Andrew Crowhurst**  
03 5201 0575



THE ABOVE PLAN IS AN ARTIST'S IMPRESSION ONLY. IT INCLUDES ELEMENTS THAT ARE FOR DISPLAY PURPOSES ONLY AND MAY NOT BE TO SCALE.  
 LANDSCAPING SHOWN IS INDICATIVE ONLY. DIMENSIONS ARE APPROXIMATE.