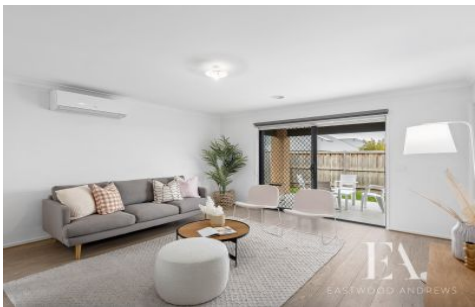




EASTWOOD ANDREWS



### 10 Concorde Street Mount Duneed VIC

4 2 2

This well presented and spacious family home is sure to impress the fussiest of buyers. The well planned, flowing floorplan is ideal for a family looking for zoned living space and a convenient location. Situated only 5 minutes to Torquay and 15 minutes to Geelong CBD, within easy access to the Ring Rd and train stations and a short distance to Armstrong Creek Town Centre.

**Price** : \$ 670,000  
**Land Size** : 349 sqm  
**View** : <https://www.eastwoodandrews.com.au/sale/vic/geelong-district/mount-duneed/residential/house/7165407>

#### Features:

- Large open plan kitchen/dining/family area
- The kitchen provides plenty of storage space, stone bench top, 900mm freestanding s/s stove and dishwasher.
- The family area leads to the undercover entertaining and lawn area
- 4 generous bedrooms, three with built in robes

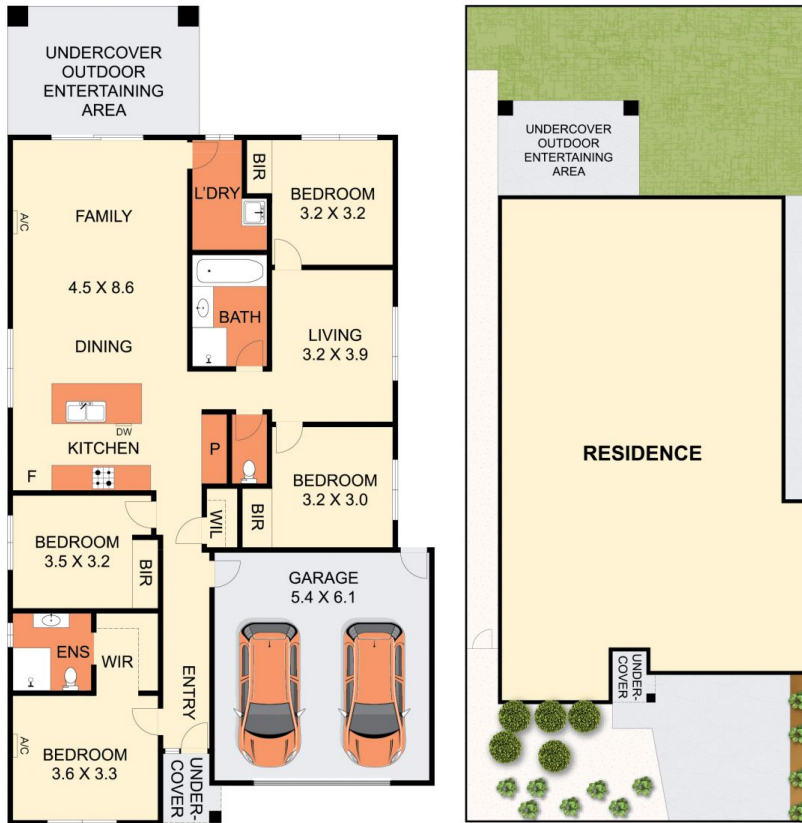


**Nicole Andrews**  
03 5201 0575



**Sarabjeet Singh**  
5201 0575

<https://www.eastwoodandrews.com.au>



THE ABOVE PLAN IS AN ARTIST'S IMPRESSION ONLY. IT INCLUDES ELEMENTS THAT ARE FOR DISPLAY PURPOSES ONLY AND MAY NOT BE TO SCALE. LANDSCAPING SHOWN IS INDICATIVE ONLY. DIMENSIONS ARE APPROXIMATE.