



6 Mercury Crescent Newcomb VIC

2 1 2

This cherished 1960's brick home is conveniently located and is the perfect choice for first home buyers or investors, with a potential rental income of \$370 per week. Minutes to Bellarine Village, ten minutes to Geelong CBD and 15 minutes to coastal areas, all amenities are close by.

Price : \$ 510,000
Land Size : 562 sqm
View : <https://www.eastwoodandrews.com.au/sale/vic/geelong-district/newcomb/residential/house/7180938>

Features:

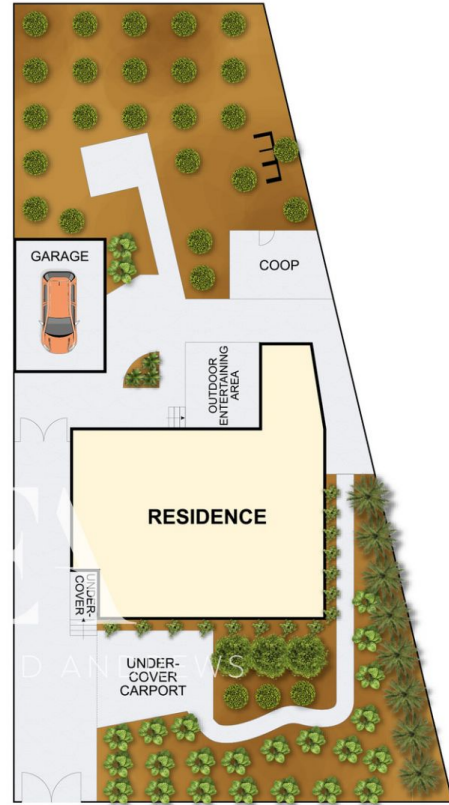
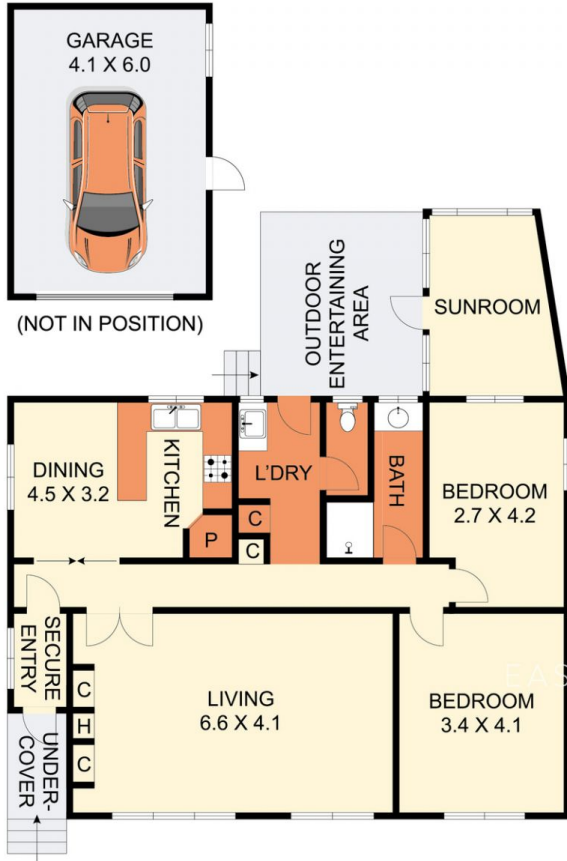
- Large north facing lounge which could easily be divided into a formal lounge and third bedroom (which it previously was)
- Kitchen/dining which was updated in early 2000, with plenty of cupboard space and a stainless steel upright stove
- Two bedrooms
- Bathroom with large shower and separate toilet.
- Timber panelling, gorgeous light fittings and wall paper from a past era



Nicole Andrews
03 5201 0575



Jayden Overall
03 5201 0575



THE ABOVE PLAN IS AN ARTIST'S IMPRESSION ONLY. IT INCLUDES ELEMENTS THAT ARE FOR DISPLAY PURPOSES ONLY AND MAY NOT BE TO SCALE.
 LANDSCAPING SHOWN IS INDICATIVE ONLY. DIMENSIONS ARE APPROXIMATE.