



EASTWOOD ANDREWS



### 29 Townsend Road Whittington VIC

2 1 2

Conveniently positioned 15 minutes from Geelong CBD and coastal areas and 5 minutes to local schools, shops, public transport and sporting reserves the convenience to all amenities, this property is certain to appeal to both owner occupiers and investors. With character and charm, its own allotment and the affordable price point, this one can't be overlooked.

**Price** : \$ 455,000  
**Land Size** : 391 sqm  
**View** : <https://www.eastwoodandrews.com.au/sale/vic/geelong-district/whittington/residential/ho use/7185445>

#### Features:

- Wide entrance foyer
- Formal lounge with gas heater and reverse cycle air conditioner
- Spacious updated kitchen/dining with ample cupboard space, freestanding 900mm stainless steel stove and dishwasher
- 2 generous bedrooms
- Stunning renovated bathroom with oversized shower,

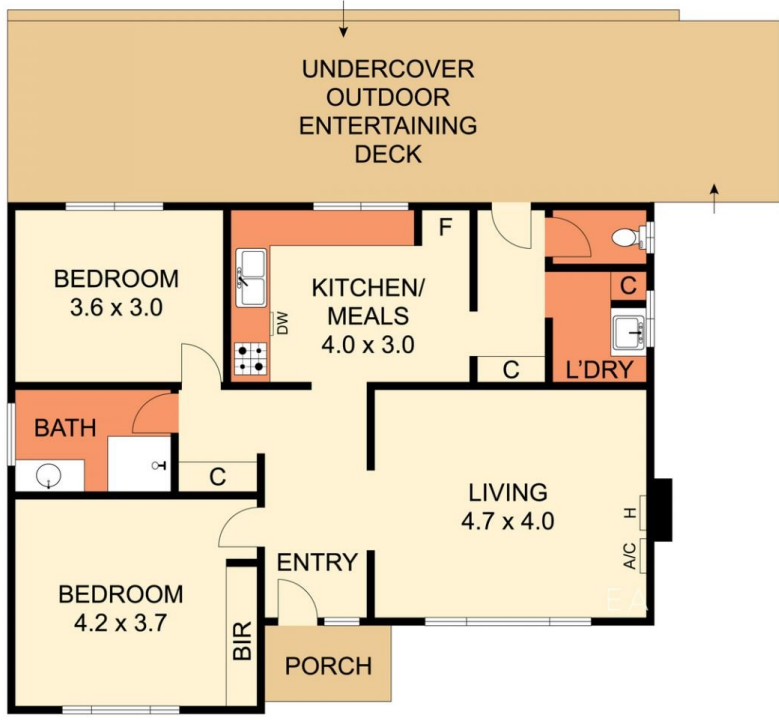


**Nicole Andrews**  
03 5201 0575



**Sarabjeet Singh**  
5201 0575

<https://www.eastwoodandrews.com.au>



THE ABOVE PLAN IS AN ARTIST'S IMPRESSION ONLY. IT INCLUDES ELEMENTS THAT ARE FOR DISPLAY PURPOSES ONLY AND MAY NOT BE TO SCALE. LANDSCAPING SHOWN IS INDICATIVE ONLY. DIMENSIONS ARE APPROXIMATE.

