



EASTWOOD ANDREWS



21 Colmar Street Lara VIC

3 2 1

Located in ever-popular Coridale estate and built by Sheridan homes, this low maintenance home is perfect for first home buyers, downsizers and investors, with a potential rental income of \$480/wk.

Approximately 3 months old and presented in immaculate condition, just move in and start enjoying the convenience of this location.

Features:

- Large open plan kitchen/dining/family area
- The kitchen provides plenty of storage space, stone bench top, 900mm freestanding s/s stove and dishwasher.
- The family area leads to the Decked outdoor entertaining area and low maintenance backyard.
- 3 generous bedrooms, three with built in robes

Price : \$ 615,000
Land Size : 270 sqm
View : <https://www.eastwoodandrews.com.au/sale/vic/geelong-district/lara/residential/house/7232248>

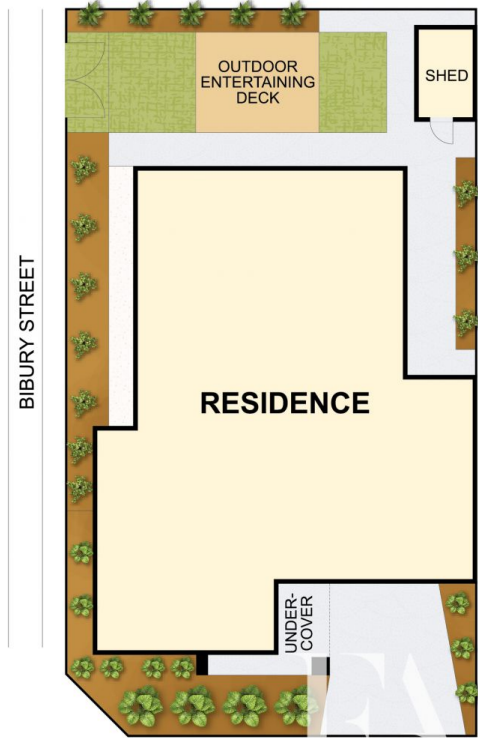
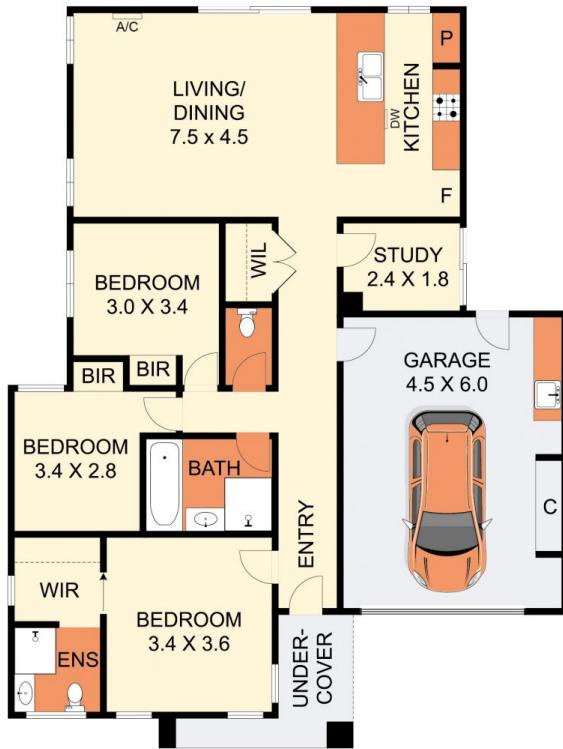


Sarabjeet Singh
5201 0575



Nicole Andrews
03 5201 0575

<https://www.eastwoodandrews.com.au>



THE ABOVE PLAN IS AN ARTIST'S IMPRESSION ONLY. IT INCLUDES ELEMENTS THAT ARE FOR DISPLAY PURPOSES ONLY AND MAY NOT BE TO SCALE. LANDSCAPING SHOWN IS INDICATIVE ONLY. DIMENSIONS ARE APPROXIMATE.