



EASTWOOD ANDREWS



270 Wilsons Road St Albans Park VIC

3 2 2

Offered at a price unheard of in the current market, this home is here to be sold and under vendor's instructions, as quickly as possible. Conveniently located within 10 minutes to Geelong CBD, 5 minutes to Bellarine Shopping Village, close to local schools and public transport and only 15 minutes to coastal areas, this spacious home is sure to attract a lot of interest.

Features:

- Formal lounge with stunning timber lined ceiling, easy care timber flooring
- Large family room with soaring timber lined ceiling with exposed beams creating an immense feeling of space, ceiling fan and built in book shelves. - - The kitchen/dining
- Three bedrooms - one with a built in robe, one with a freestanding wardrobe and the master has an ensuite and built in robe.

Price : \$ 450,000
Land Size : 568 sqm
View : <https://www.eastwoodandrews.com.au/sale/vic/geelong-district/st-albans-park/residential/house/7336036>

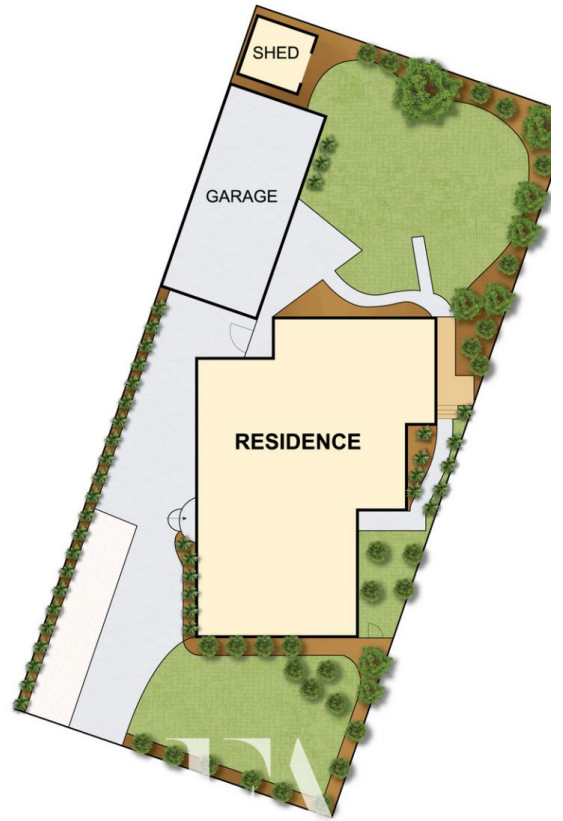
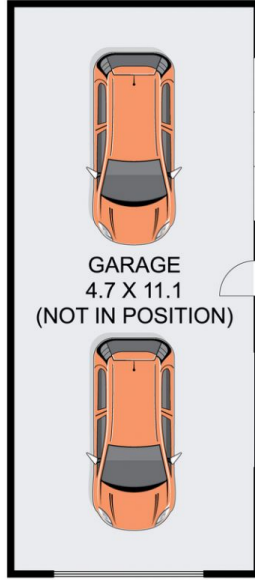
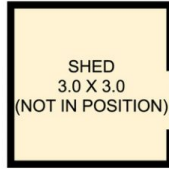
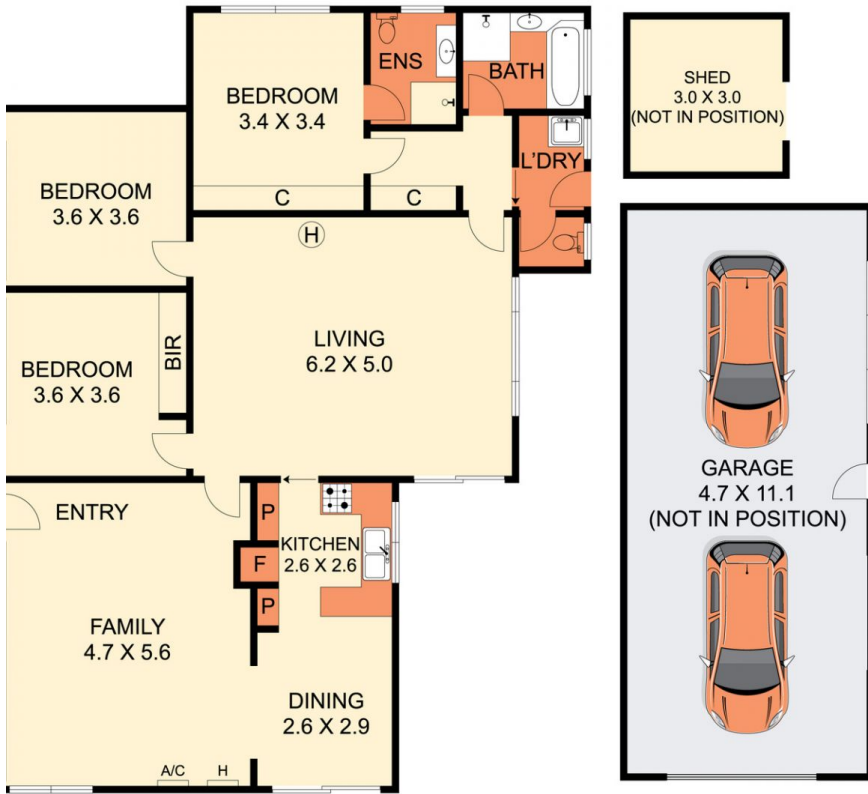


Nicole Andrews
03 5201 0575



Sarabjeet Singh
5201 0575

<https://www.eastwoodandrews.com.au>



THE ABOVE PLAN IS AN ARTIST'S IMPRESSION ONLY, IT INCLUDES ELEMENTS THAT ARE FOR DISPLAY PURPOSES ONLY AND MAY NOT BE TO SCALE. LANDSCAPING SHOWN IS INDICATIVE ONLY. DIMENSIONS ARE APPROXIMATE.