



EASTWOOD ANDREWS



1/38 Pride Avenue Hamlyn Heights VIC

2 1 1

Newly and tastefully updated and situated in a quiet complex, this property makes a very wise investment choice. Offered at entry point price level for Hamlyn Heights, minutes to local schools, shops, public transport and within easy access to the Ring Rd and Geelong CBD, the convenience of this location is what makes it highly sought after. Perfect for first home buyers wanting to step into the market, downsizers or investors (potential rental income of \$350/week).

View : <https://www.eastwoodandrews.com.au/sale/vic/geelong-district/hamlyn-heights/residential/unit/7484477>

Features:

- Open plan kitchen/meals/lounge with a split system AC for year round comfort and large windows allowing an abundance of natural light and sunshine.

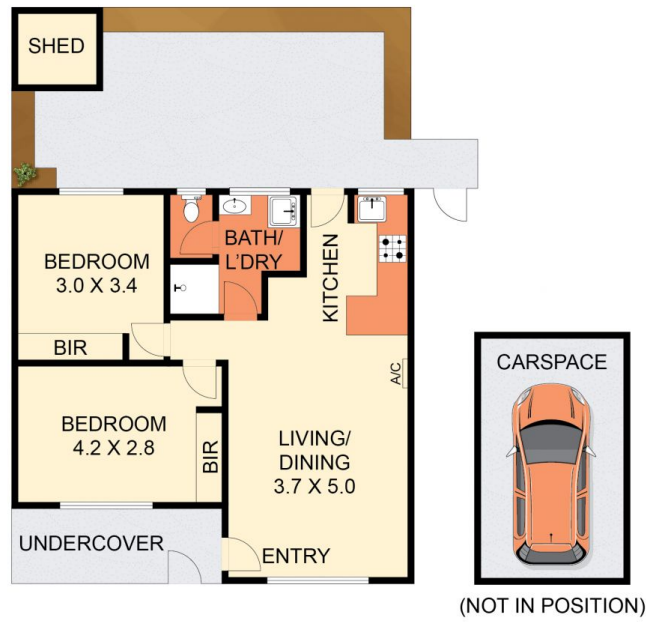


Nicole Andrews
03 5201 0575



Sarabjeet Singh
5201 0575

<https://www.eastwoodandrews.com.au>



THE ABOVE PLAN IS AN ARTIST'S IMPRESSION ONLY. IT INCLUDES ELEMENTS THAT ARE FOR DISPLAY PURPOSES ONLY AND MAY NOT BE TO SCALE. LANDSCAPING SHOWN IS INDICATIVE ONLY. DIMENSIONS ARE APPROXIMATE.