



EASTWOOD ANDREWS



101 Camden Road Newtown VIC

4 2 2

Quietly situated in the prestigious river area of Newtown, this home is walking distance to the Barwon River, Geelong's finest schools, sporting reserves, public transport and only 10 minutes to Geelong CBD. Perfect for families wanting a peaceful and established location with convenient, comfortable and spacious living.

Features:

- Open plan kitchen/dining/lounge with adjoining 2nd sitting area
- Updated kitchen with stone benchtops, electric cooktop, oven and dishwasher
- The lounge has large stylish north facing windows allowing an abundance of natural light into the main living space.
- 3 bedrooms each with built in robes, master with ensuite and walk in robe zoned separately towards the rear of the home

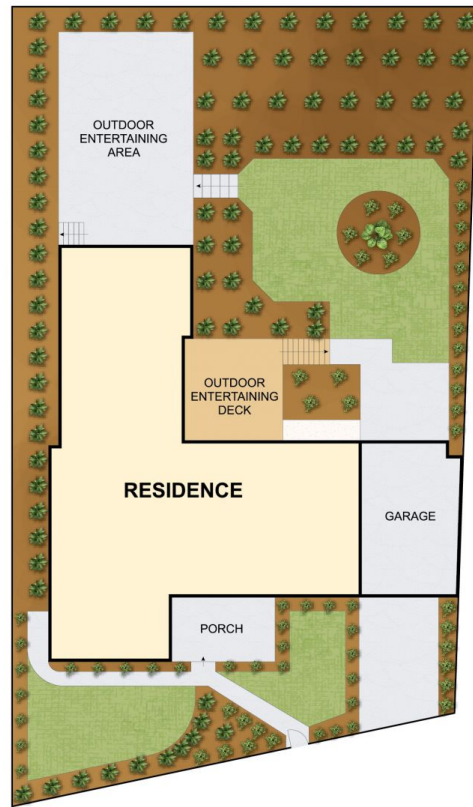
Land Size : 693.5 sqm
View : <https://www.eastwoodandrews.com.au/sale/vic/geelong-district/newtown/residential/house/7486394>



Nicole Andrews
03 5201 0575



TL Mach
03 5201 0575



THE ABOVE PLAN IS AN ARTIST'S IMPRESSION ONLY. IT INCLUDES ELEMENTS THAT ARE FOR DISPLAY PURPOSES ONLY AND MAY NOT BE TO SCALE. LANDSCAPING SHOWN IS INDICATIVE ONLY. DIMENSIONS ARE APPROXIMATE.