



EASTWOOD ANDREWS



10 Meda Court Grovedale VIC

3 1 4

Buying a home? Let's go! Situated on 816m² (approx.) in sought after location of Grovedale. This much loved entertainer is only moments away from popular schools, sporting facilities, train station, local shopping precinct and Waurn Ponds Shopping Centre.

The moment you walk in you will be impressed by the spacious ideal light filled living area and well-appointed fully equipped kitchen with a touch a class. Features electric oven, induction cooktop, canopy rangehood and dishwasher, excellent storage with plenty of bench space and perfectly positioned dining area to relax.

Offering 3 large bedrooms all with BIR's, central bathroom with single vanity and shower has modern touches adjacent to separate toilet.

Outside is where it's at! Plenty of area for the kids to run around with undercover alfresco is perfect for entertaining leads to huge garage and oversized shed, ideal to set up a

Price : \$ 600,000
Land Size : 816 sqm
View : <https://www.eastwoodandrews.com.au/sale/vic/geelong-district/grovedale/residential/home/7547675>

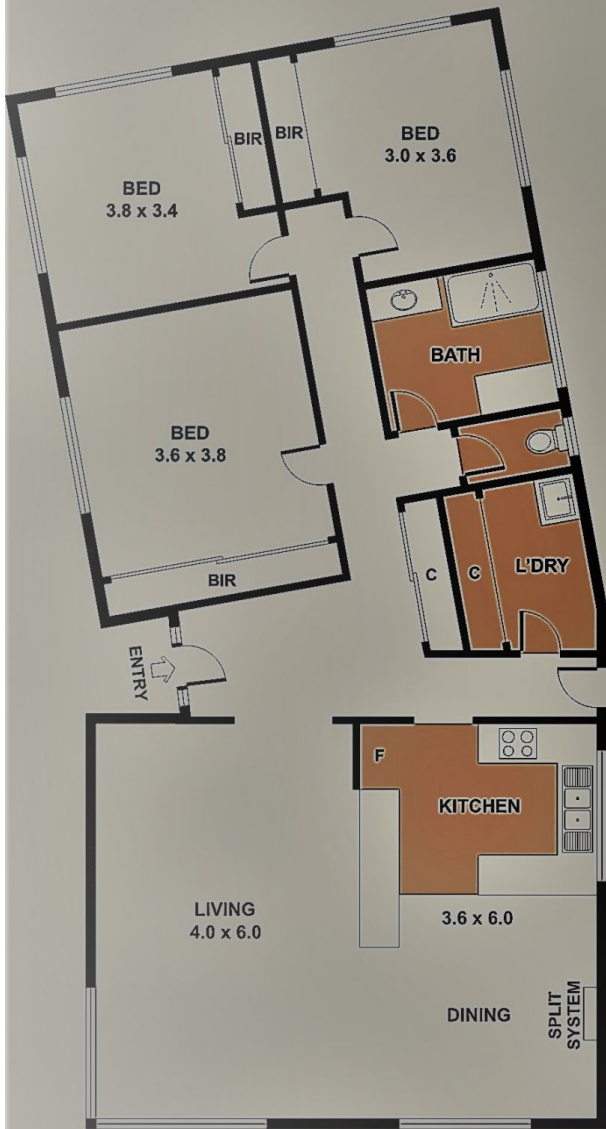


Stephen Thomas
03 5201 0575

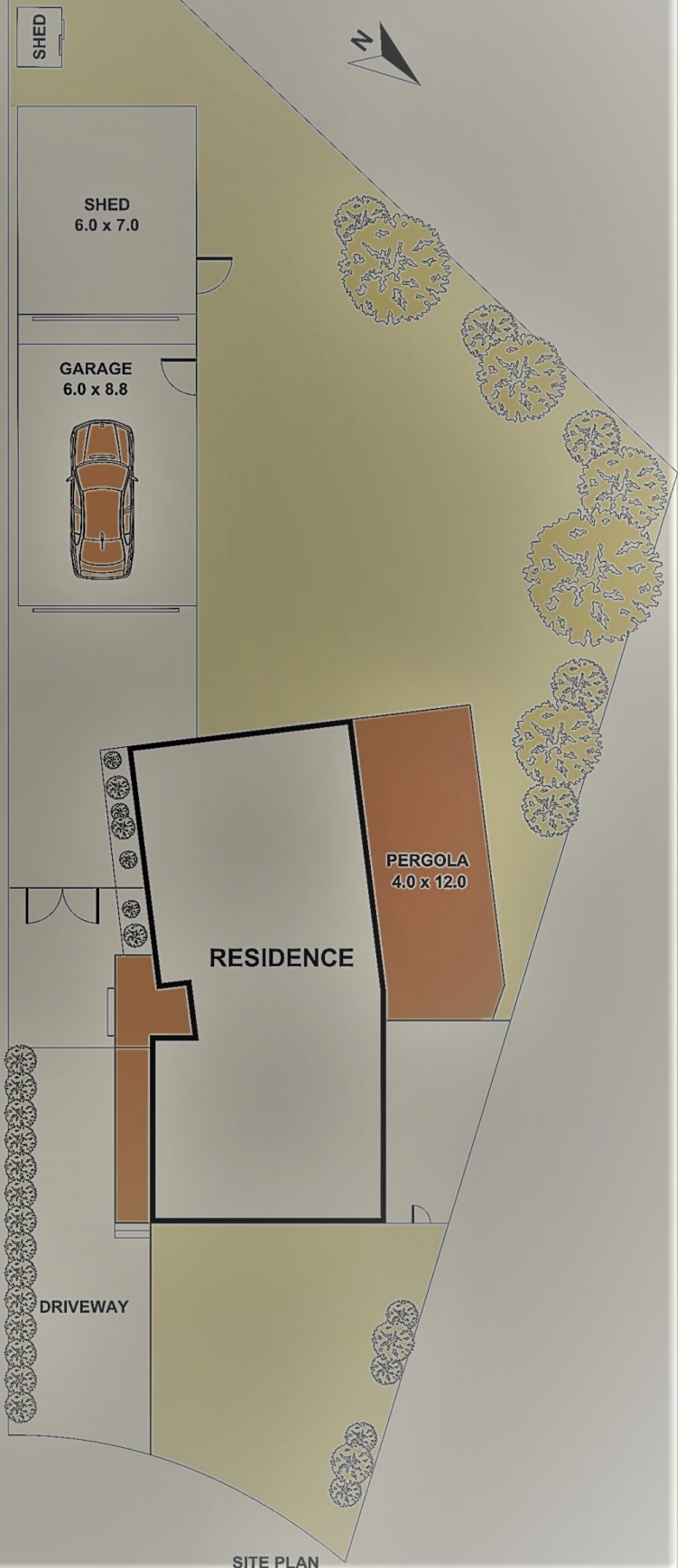


Andrew Crowhurst
03 5201 0575

<https://www.eastwoodandrews.com.au>



TOTAL INTERNAL AREA APPROX : 118 m²



SITE PLAN