



EASTWOOD ANDREWS



**1C Nelson Avenue Newcomb VIC**

3 1 4

Situated approximately 700 metres or a 2 minute walk to the Bellarine Village, you couldn't live closer to all amenities including supermarkets, cafes, Newcomb High School, medical facilities and public transport. 5 minutes to Geelong CBD and 15 minutes to the Bellarine beaches, this suburb is so affordable given the convenience it offers.

**Features:**

- Formal lounge
- Kitchen/dining
- 3 bedrooms
- 1 bathroom
- Large lawn area, secure fencing
- 3 car garage
- Split system AC and heating
- Allotment approx 822sqm
- Currently leased to long term tenant, collect the rent whilst putting your

**Land Size** : 822 sqm  
**View** : <https://www.eastwoodandrews.com.au/sale/vic/geelong-district/newcomb/residential/house/7590419>

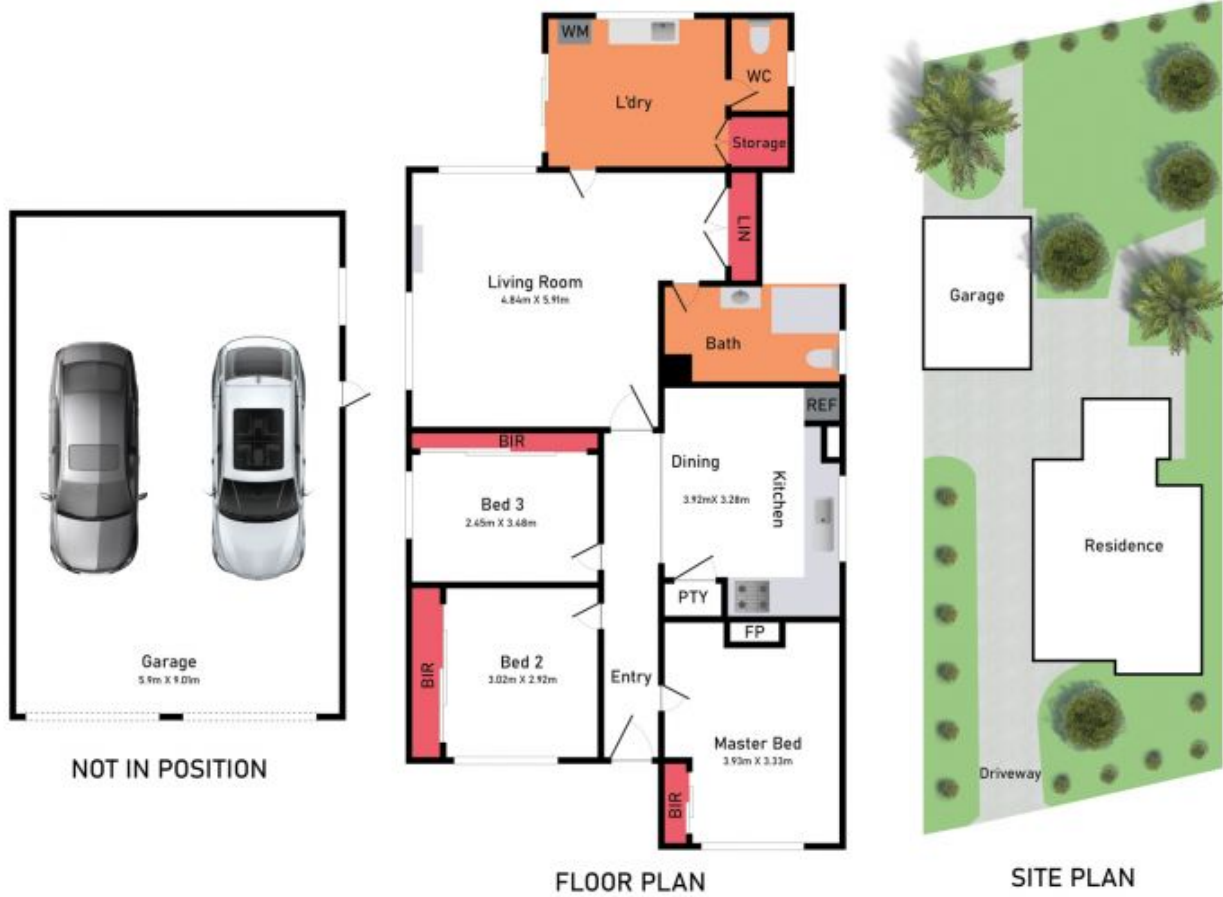


**Nicole Andrews**  
03 5201 0575



**Jayden Overall**  
03 5201 0575

<https://www.eastwoodandrews.com.au>



Preview Media has made every attempt to ensure the accuracy of the floor plan contained here, measurements are approximate and no responsibility is taken for any error, omission or misstatement. This plan is for illustrative purposes only.

1C NELSON AVENUE, NEWCOMB





SITE PLAN

Preview Media has made every attempt to ensure the accuracy of the floor plan contained here, measurements are approximate and no responsibility is taken for any error, omission or misstatement. This plan is for illustrative purposes only.

---

1C NELSON AVENUE, NEWCOMB

