



EASTWOOD ANDREWS



1 Woorayl Street Hamlyn Heights VIC

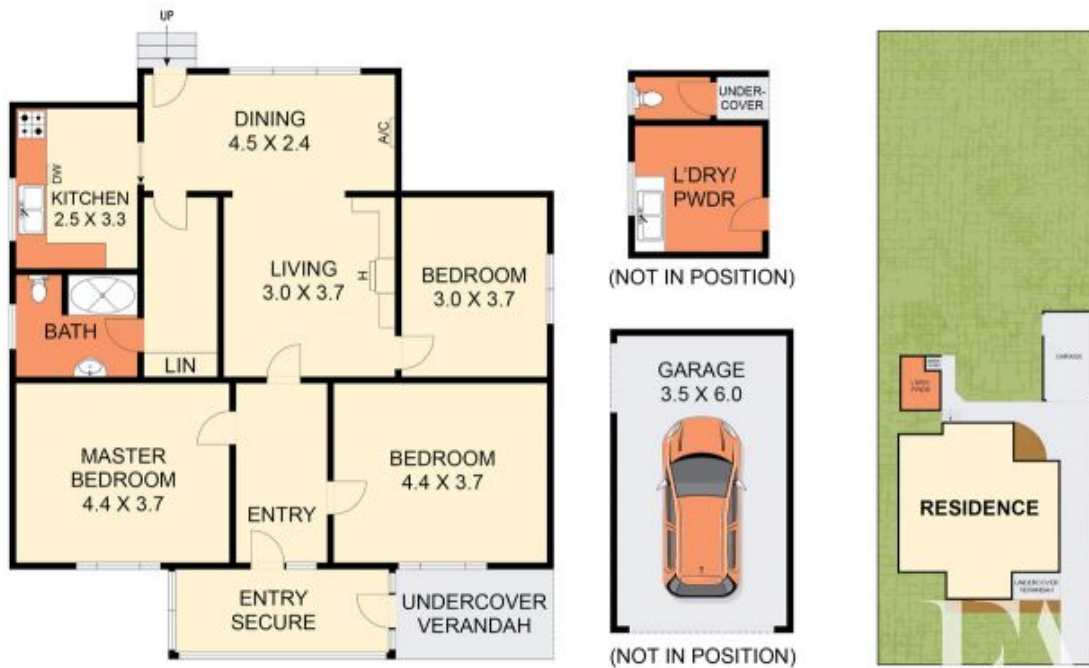
3 1 1

Opportunity knocks with a current Planning Permit in place for a 2 Lot Subdivision & Construction of Second Dwelling in this prime Hamlyn Heights location. Within minutes to Shannon Ave shops, public transport and local facilities. You can retain the period weatherboard home offering 3 bedrooms, open plan living with an updated kitchen and bathroom with potential. There's high ceilings, original timber floors and good natural light. The home sits close to the front boundary allowing for the construction of a spacious 3 bed, 2 bath townhouse with north facing living, kitchen and outdoor space. Full concept plans are available including elevations and site plans. The choice is yours, move in and enjoy or rent it out (recently bought up to minimum rental standards with block out blinds, heating & cooling, dishwasher and gas connected) whilst the subdivision is completed. Call today for more information.

Price : \$ 715,000
Land Size : 674 sqm
View : <https://www.eastwoodandrews.com.au/sale/vic/geelong-district/hamlyn-heights/residential/house/7625780>



Andrew Crowhurst
03 5201 0575



THE ABOVE PLAN IS AN ARTIST'S IMPRESSION ONLY. IT INCLUDES ELEMENTS THAT ARE FOR DISPLAY PURPOSES ONLY AND MAY NOT BE TO SCALE.
LANDSCAPING SHOWN IS INDICATIVE ONLY. DIMENSIONS ARE APPROXIMATE.