



EASTWOOD ANDREWS



30A Charlotte Avenue Newcomb VIC

3 1

Discover charm and comfort in this adorable weatherboard home located in the heart of Newcomb, walking distance to local schools, Bellarine Village and sporting reserves and only 5 minutes to Geelong CBD. Step into a world of comfortable living with this inviting property, boasting character, natural light and warmth at every turn. With its picturesque exterior and quaint design, this home exudes timeless appeal.

Features:

- Open plan kitchen/dining/lounge
- Stunning kitchen with gas cooktop, electric fanforced oven and tiled splashback,
- Three generous bedrooms each with split system air conditioners
- Large fully renovated bathroom providing separate bath, and shower, modern vanity and toilet
- Second family area with sliding doors to the private

Price : \$549,000 - \$599,000

View : <https://www.eastwoodandrews.com.au/sale/vic/geelong-district/newcomb/residential/house/8008108>

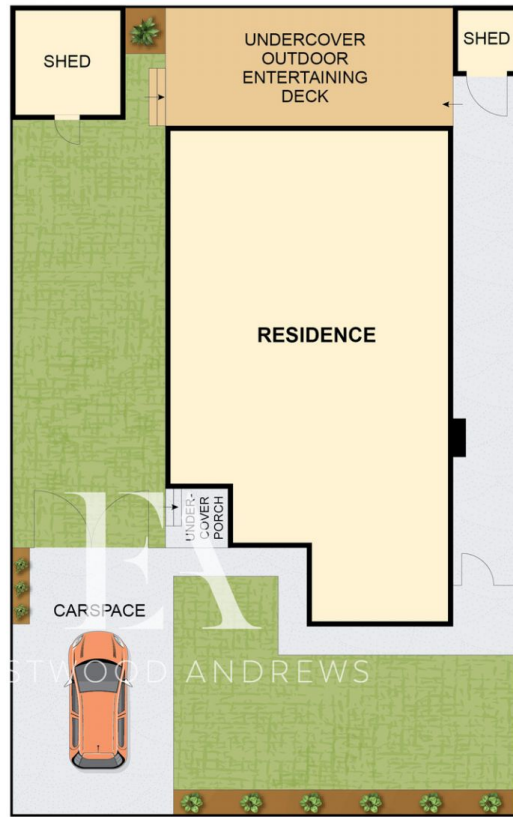


Nicole Andrews
03 5201 0575



Andrew Crowhurst
03 5201 0575

<https://www.eastwoodandrews.com.au>



THE ABOVE PLAN IS AN ARTIST'S IMPRESSION ONLY. IT INCLUDES ELEMENTS THAT ARE FOR DISPLAY PURPOSES ONLY AND MAY NOT BE TO SCALE. LANDSCAPING SHOWN IS INDICATIVE ONLY. DIMENSIONS ARE APPROXIMATE.