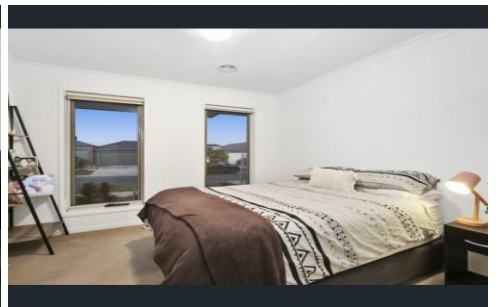
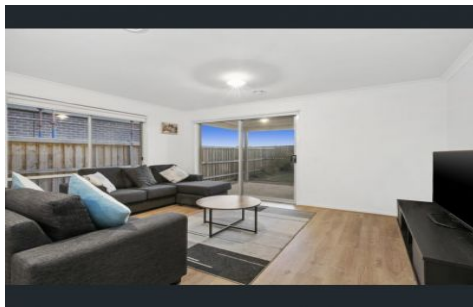
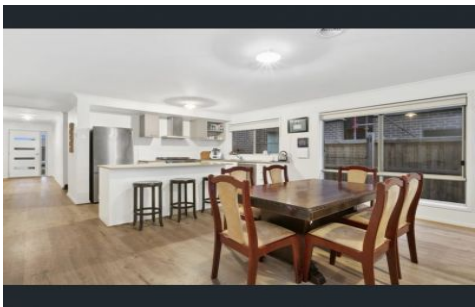
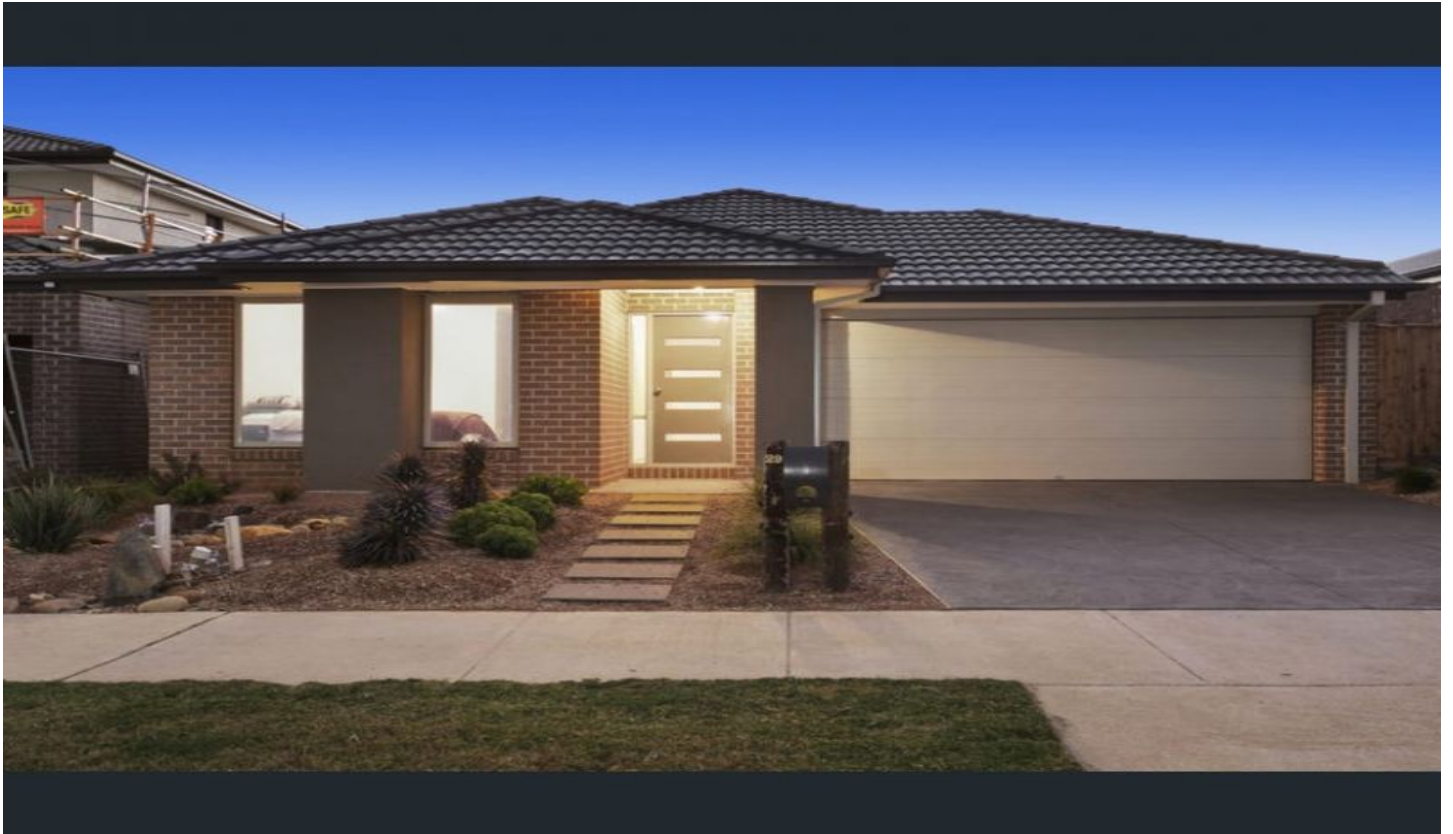




EASTWOOD ANDREWS



29 Aviation Drive Mount Duneed VIC

4 2 4

Family home in the heart of Mount Duneed. Close to excellent shopping, transport, schools and the surf coast. Features include
Main bedroom with full ensuite
Three bedrooms with built in robes
Open plan living, kitchen and dining
Double garage with remote access.

View : <https://www.eastwoodandrews.com.au/lease/vic/geelong-district/mount-duneed/residential/house/8019972>



Pracilla Lal
03 5201 0575



Barb Thompson
03 5201 0575