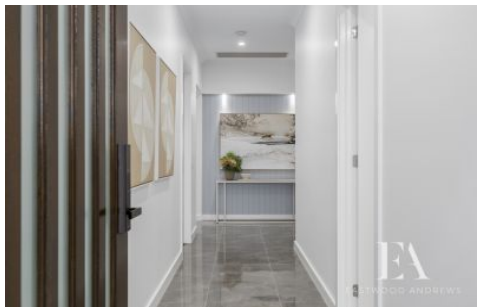




EASTWOOD ANDREWS



29 Farndale Drive Lara VIC

4 2 2

Welcome to this exquisite brand-new custom build, a luxurious residence with unique add-ons that exude sophistication and individuality. Spanning an impressive 448m² approximately, this home is a testament to quality and style. Stylish from the onset with a striking timber feature facade; continued quality and high end specifications throughout are guaranteed to impress.

Upon entering, the 3 meter high ceilings, stunning marble-style tiles, and elegant bulk heads immediately set the tone for refined living. The Master bedroom to the front of the home is spacious with ensuite featuring dual basins plus a great sized walk-in robe seamlessly connected to the open-plan living, dining, and kitchen spaces that open up to the rear alfresco. The gourmet kitchen is a chef's delight, featuring 60mm stone benches, an island bench, butler's pantry, 900mm gas cooktop/oven, and a

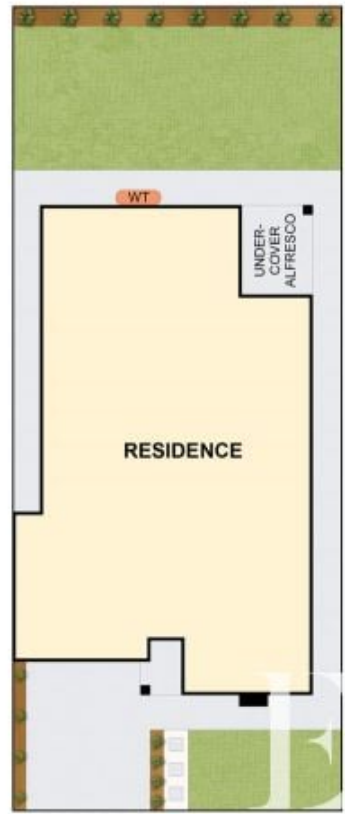
Price : \$790,000-\$830,000 Custom - Build,Brand new Home
Land Size : 448 sqm
View : <https://www.eastwoodandrews.com.au/sale/vic/geelong-district/lara/residential/house/8067884>



Sarabjeet Singh
5201 0575



Nicole Andrews
03 5201 0575



THE ABOVE PLAN IS AN ARTIST'S IMPRESSION ONLY. IT INCLUDES ELEMENTS THAT ARE FOR DISPLAY PURPOSES ONLY AND MAY NOT BE TO SCALE. LANDSCAPING SHOWN IS INDICATIVE ONLY. DIMENSIONS ARE APPROXIMATE.