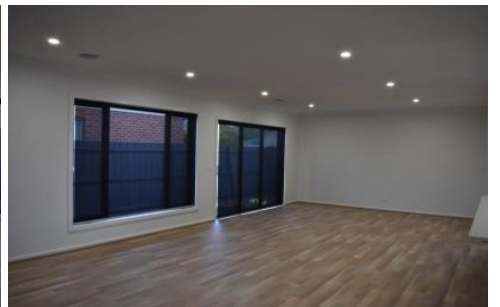




EASTWOOD ANDREWS



11a Lomond Terrace East Geelong VIC

3 2 2

This executive style townhouse is one of two on the block and will suit those wanting to live in close proximity to the CBD and waterfront. Located close to public transport and the CBD this position perfect home won't last long.

Offering a large open plan living area with ducted heating throughout and air con in the lounge for all year comfort. Modern kitchen with stone bench tops, island bench, ample cupboard and storage space also with dishwasher, gas cooktop and electric oven.

The main bedroom features walk in robe and private ensuite. The remaining two bedrooms have built in robes, serviced by a central bathroom with full sized separate bath and a shower.

Outside decking area with plenty of room for a BBQ and table and well maintained landscaped gardens surrounding around the home for extra outdoor space. With a double garage with internal access this home is sure to impress.

Price : \$540 pw

View : <https://www.eastwoodandrews.com.au/lease/vic/geelong-district/east-geelong/residential/townhouse/8095616>

<https://www.eastwoodandrews.com.au>