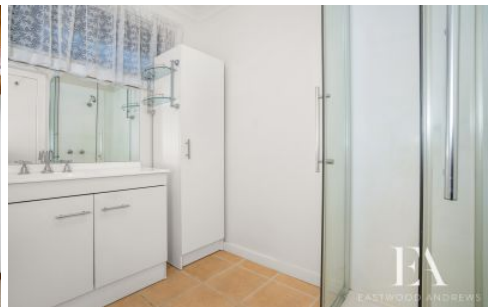




EASTWOOD ANDREWS



**39 Chapel Street Whittington VIC**

3 1 4

This inviting 3-bedroom house offers a perfect blend of comfort and convenience, situated within a 10 minute drive to Geelong CBD and approx 5 minutes to Bellarine Shopping Village.

Features:

- Formal lounge with airconditioner
- Large kitchen/dining with plenty of cupboard and bench space
- 3 generous bedrooms
- Bathroom with separate bath and shower, separate toilet.
- Undercover outdoor area with cafe blinds to allow usage all year round.
- Outdoors is lawn area, shedding, plenty of offstreet parking with driveway space for 4 cars and a garage.
- Solar panels to help keep your energy bills down.

**Price** : \$ 515,000

**View** : <https://www.eastwoodandrews.com.au/sale/vic/geelong-district/whittington/residential/house/8107786>



**Nicole Andrews**  
03 5201 0575



**Sarabjeet Singh**  
5201 0575

Make this charming Whittington house your next home.

<https://www.eastwoodandrews.com.au>