



EASTWOOD ANDREWS



50 Marshalltown Road Marshall VIC

4 2 2

With 4 bedrooms, master with ensuite and walk in robe, 3 bedrooms with robes share the family bathroom and there's a separate toilet, 2 living areas, the galley kitchen offers a walk in pantry and good bench space and opens up to the main living area with dining space and sliding door access to the alfresco area. The double remote garage has secure internal access. With a secure back yard and scope to value add with some additional landscaping. Currently leased on a month by month basis at \$677 per week, this property offers excellent returns. Call today for more information.

Type : House
Land Size : 450 sqm
View : <https://www.eastwoodandrews.com.au/sale/vic/geelong-district/marshall/residential/house/8129142>

Please note, all information is provided by third parties. Prospective purchasers are advised to make their own enquiries with respect to the accuracy of information

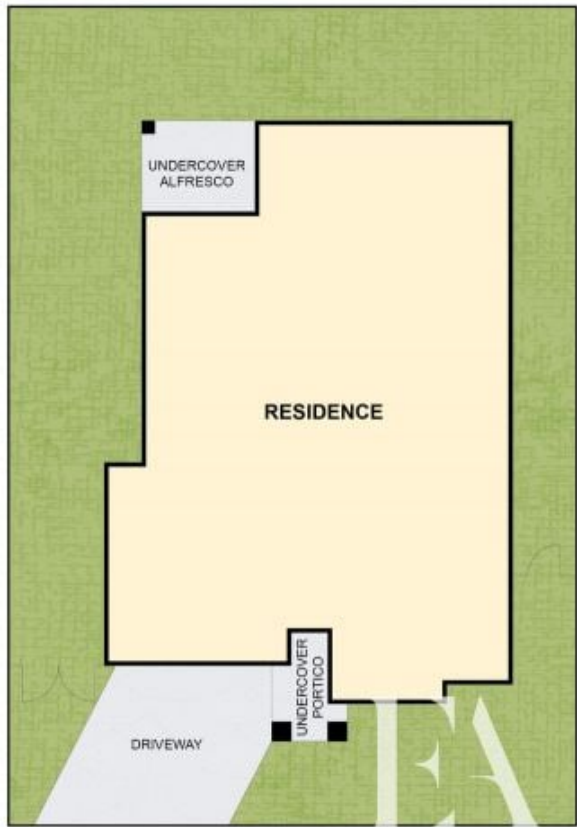
[For full version visit the website](https://www.eastwoodandrews.com.au)



Andrew Crowhurst
03 5201 0575



Nicole Andrews
03 5201 0575



THE ABOVE PLAN IS AN ARTIST'S IMPRESSION ONLY. IT INCLUDES ELEMENTS THAT ARE FOR DISPLAY PURPOSES ONLY AND MAY NOT BE TO SCALE. LANDSCAPING SHOWN IS INDICATIVE ONLY. DIMENSIONS ARE APPROXIMATE.